

PNH EQA 2009

Henk Wind
SKML najaarsbespreking
Woerden 17 november 2009

UITSLAGFORMULIER PNH RONDZENDING



Monsternummer

Rondzending ontvangen op Ingezet op:

Deelnemend Instituut: Contactpersoon

Email adres: Gebruikte Flowcytometer:

UITSLAG

Rode Bloedcellen

PNH Kloon totaal	Type II Cellen	Type III Cellen	Gebruikte Ab	Firma	Fluorochroom
<input type="text"/> %	<input type="text"/> %	<input type="text"/> %	<input type="text"/>	<input type="text"/>	<input type="text"/>
<input type="text"/> %	<input type="text"/> %	<input type="text"/> %	<input type="text"/>	<input type="text"/>	<input type="text"/>

Witte Bloedcellen

Gebruikte methode

Monocyten (rapporteren binnen monocyten populatie)

PNH Kloon	Gebruikte Ab	Firma	Fluorochroom	
<input type="text"/> %	<input type="text"/>	<input type="text"/>	<input type="text"/>	% monocyten binnen WBC <input type="text"/>
<input type="text"/> %	<input type="text"/>	<input type="text"/>	<input type="text"/>	definitie: <input type="text"/>
<input type="text"/> %	<input type="text"/>	<input type="text"/>	<input type="text"/>	
<input type="text"/> %	<input type="text"/>	<input type="text"/>	<input type="text"/>	

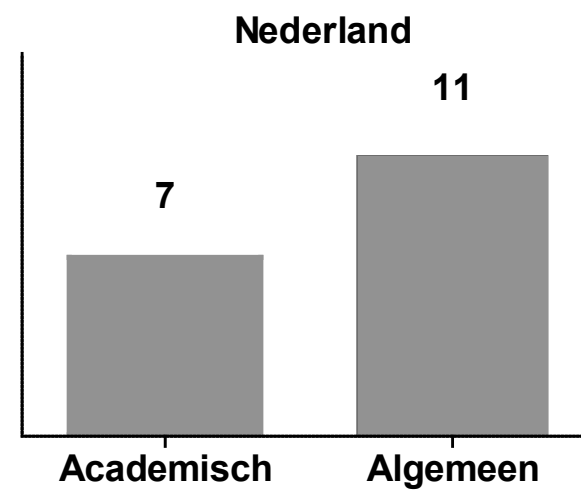
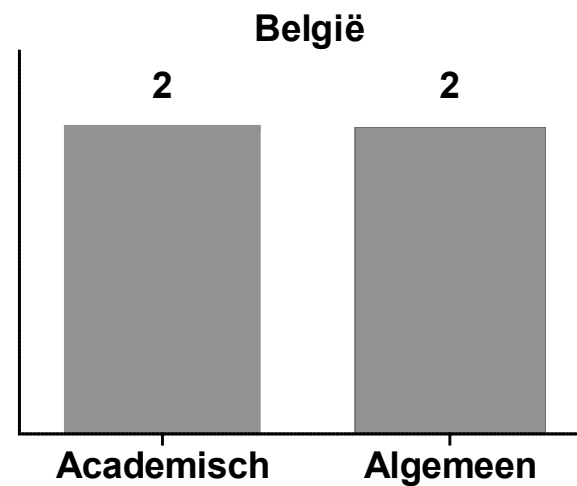
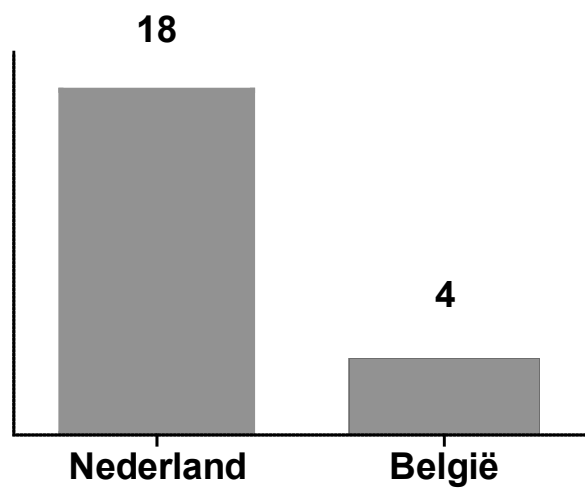
Granulocyten (rapporteren binnen granulocyten populatie)

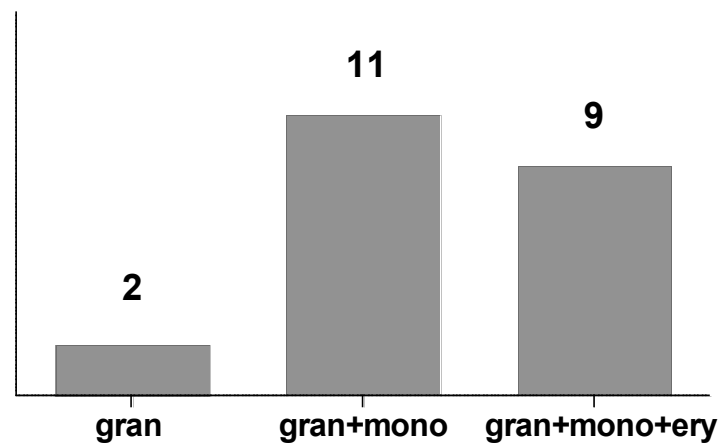
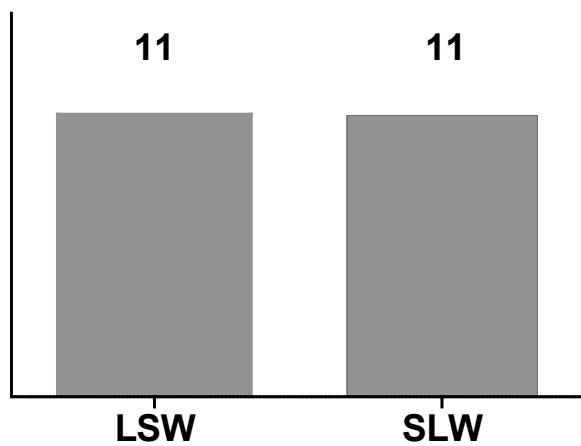
PNH Kloon %	Gebruikte Ab	Firma	Fluorochroom	
<input type="text"/> %	<input type="text"/>	<input type="text"/>	<input type="text"/>	% granulocyten binnen WBC <input type="text"/>
<input type="text"/> %	<input type="text"/>	<input type="text"/>	<input type="text"/>	definitie: <input type="text"/>
<input type="text"/> %	<input type="text"/>	<input type="text"/>	<input type="text"/>	
<input type="text"/> %	<input type="text"/>	<input type="text"/>	<input type="text"/>	

Conclusie:

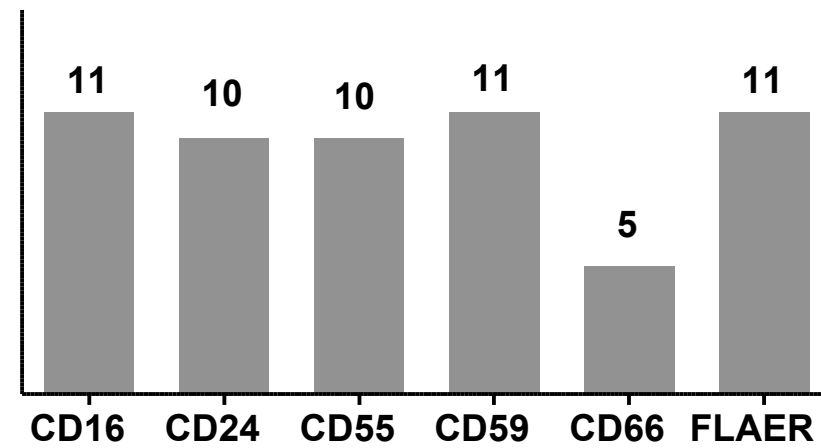
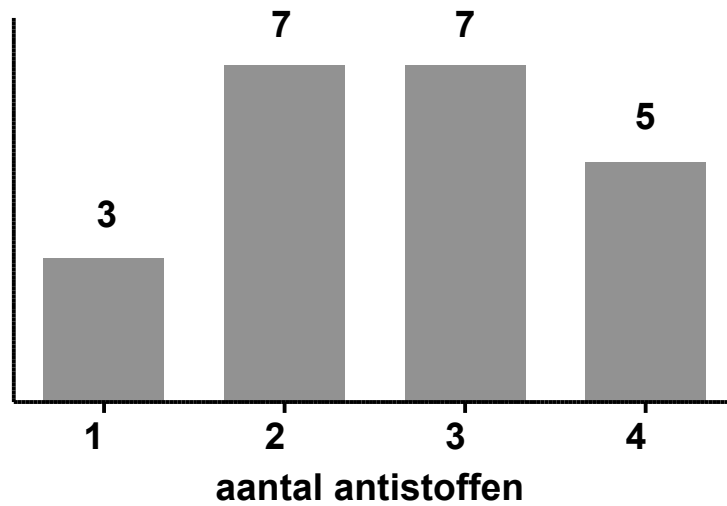
Rode Bloedcellen % Monocyten % Granulocyten %

Opmerkingen: (eventueel)

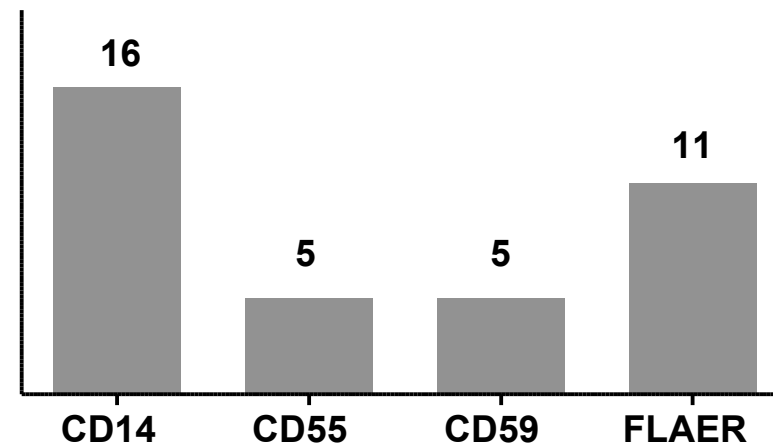
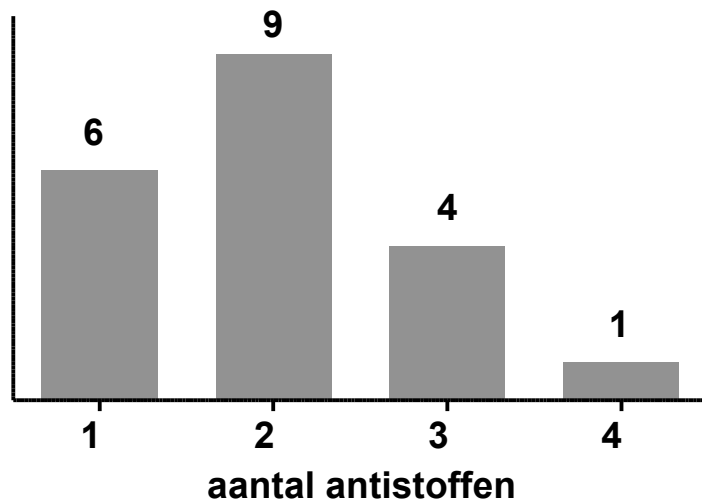




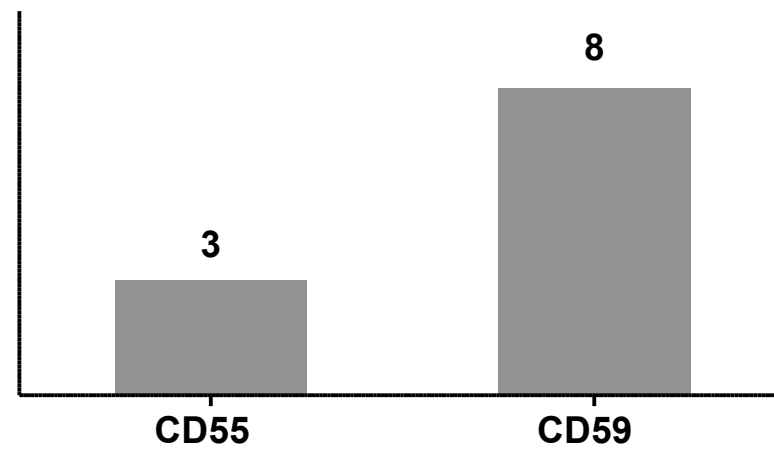
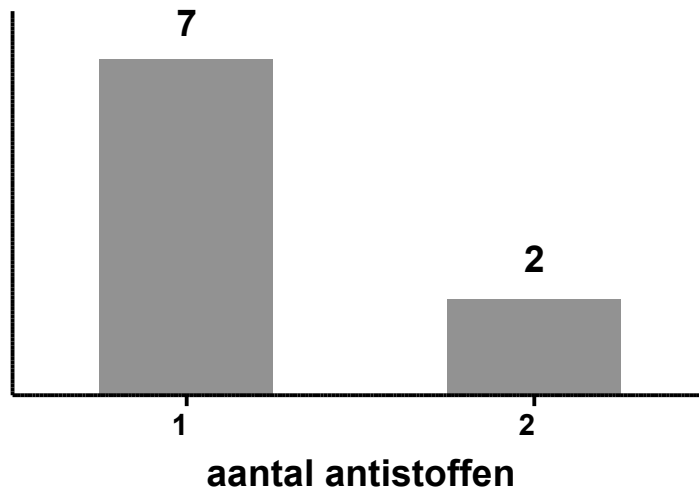
granulocyten

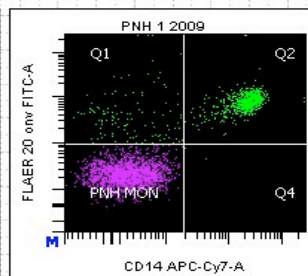
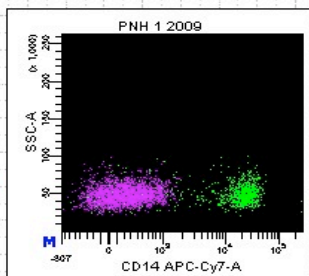
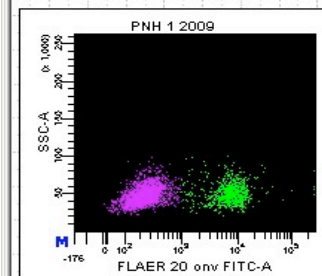
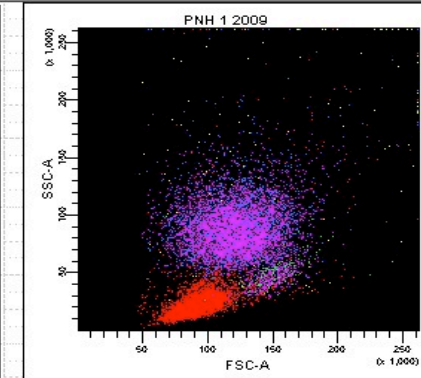
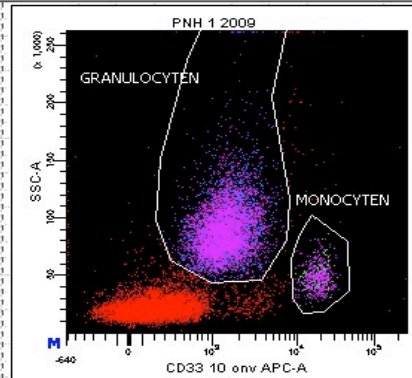
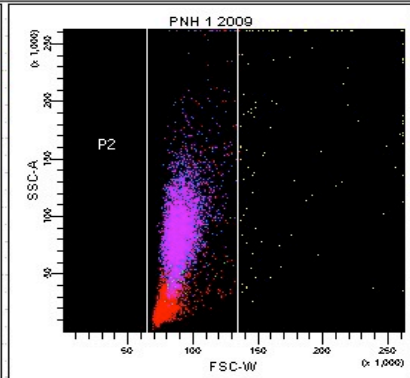
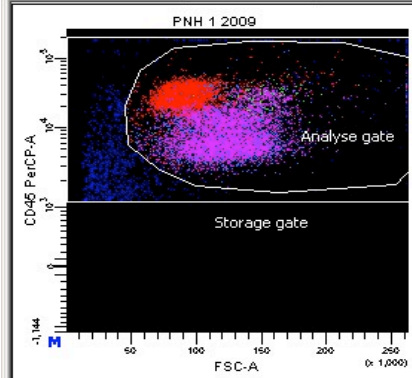


monocyten



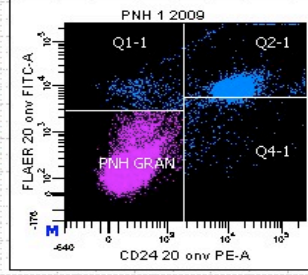
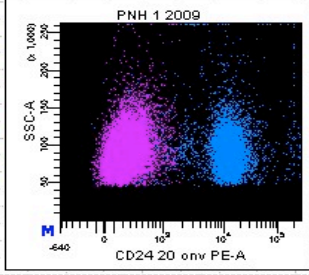
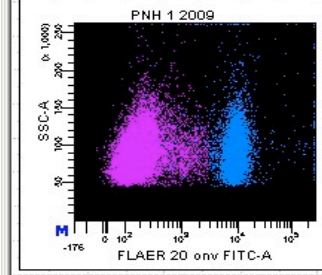
erythrocyten



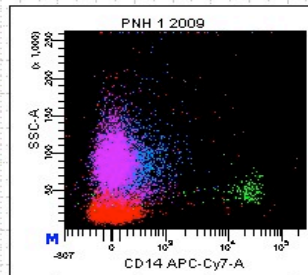
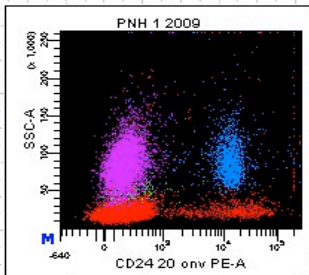
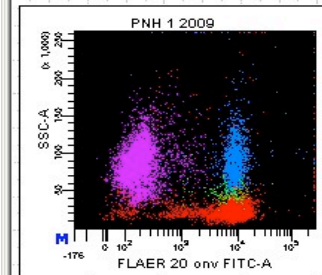


Tube: PNH 1 2009

Population	#Events	%Parent	%Total
All Events	75,085	###	100.0
Analyse gate	71,041	94.6	94.6
P2	70,506	99.2	93.9
MONOCYTEN	2,894	4.1	3.9
Q1	126	4.4	0.2
Q2	725	25.1	1.0
PNH MON	2,041	70.5	2.7
Q4	2	0.1	0.0
GRANULOCYTEN	27,348	38.8	36.4
Q1-1	314	1.1	0.4
Q2-1	6,666	24.4	8.9
PNH GRAN	19,963	73.0	26.6
Q4-1	405	1.5	0.5
Storage gate	75,055	100.0	100.0

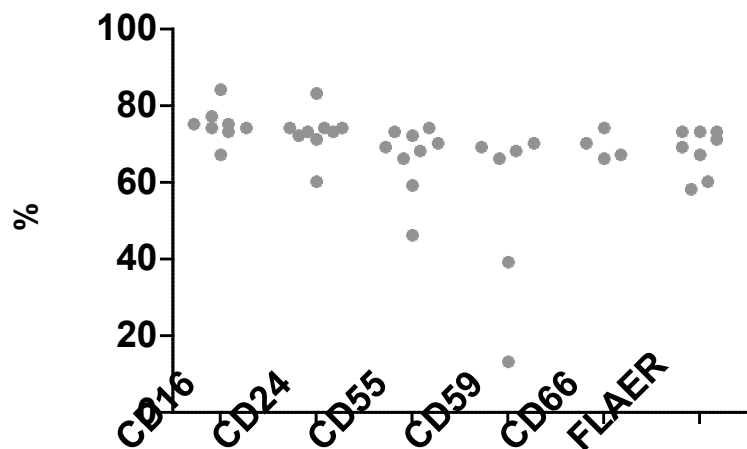


Experiment Name: PNH 1 2009_001
 Specimen Name: LWPB
 Tube Name: PNH 1 2009
 Record Date: Apr 15, 2009 2:10:17 PM
 \$OP: LLDflow

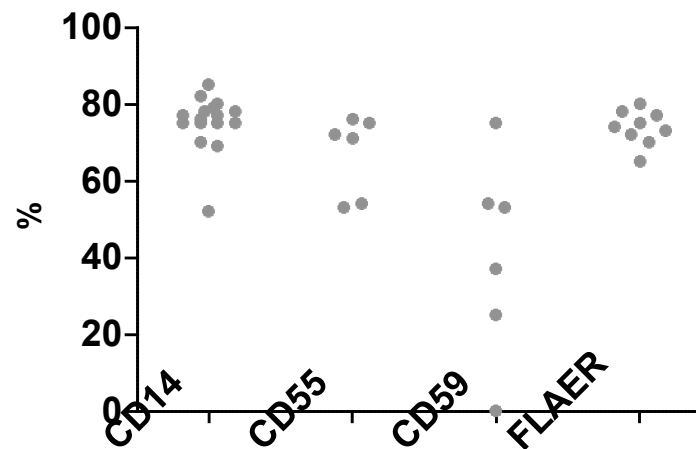


Population	#Events	%Parent
All Events	75,085	###
Analyse gate	71,041	94.614
P2	70,506	99.247
MONOCYTEN	2,894	4.105
Q1	126	4.354
Q2	725	25.052
PNH MON	2,041	70.525
Q4	2	0.069
GRANULOCYTEN	27,348	38.788
Q1-1	314	1.148
Q2-1	6,666	24.375
PNH GRAN	19,963	72.996
Q4-1	405	1.481
Storage gate	75,055	99.960

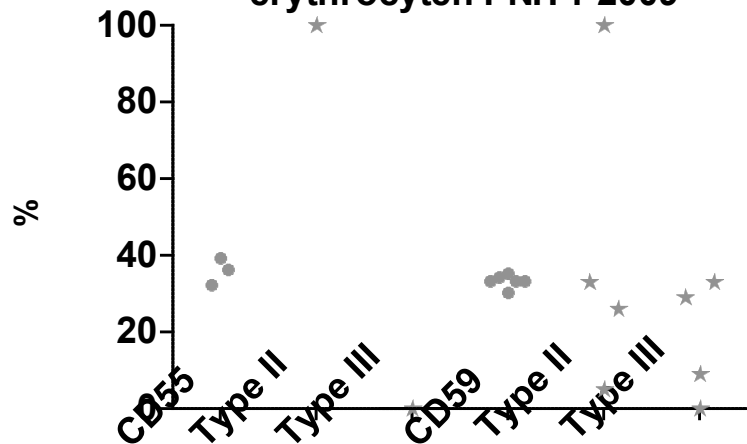
granulocyten PNH 1 2009

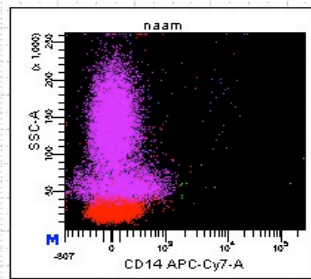
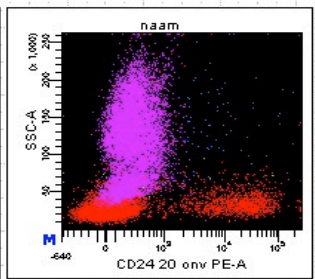
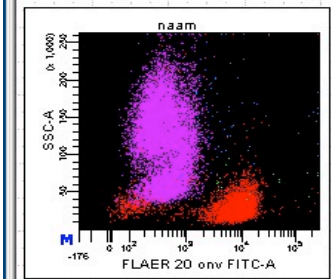
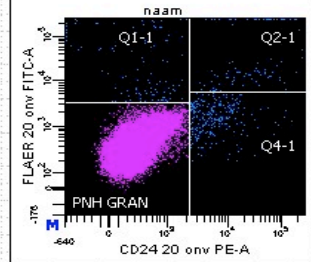
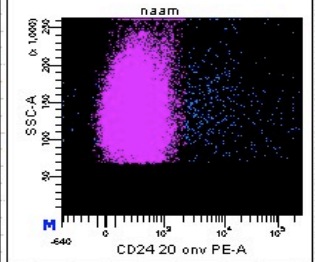
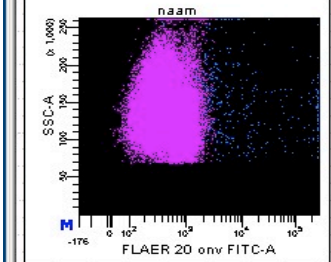
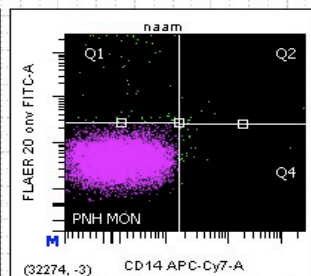
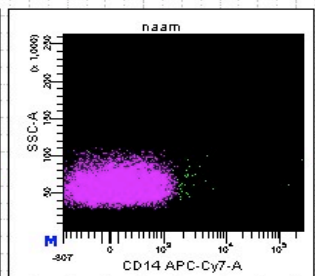
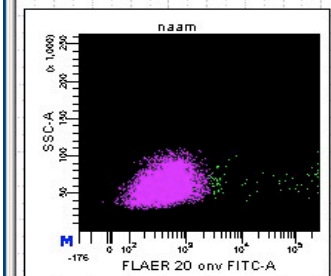
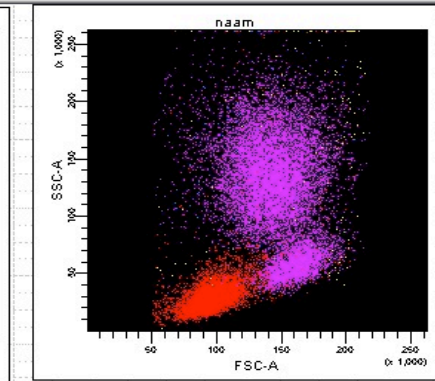
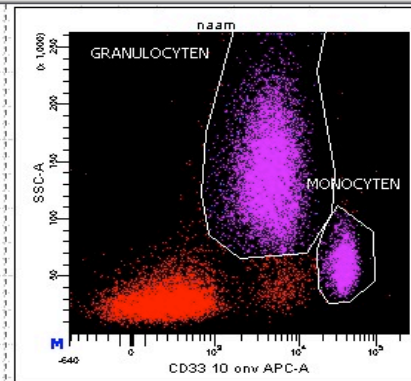
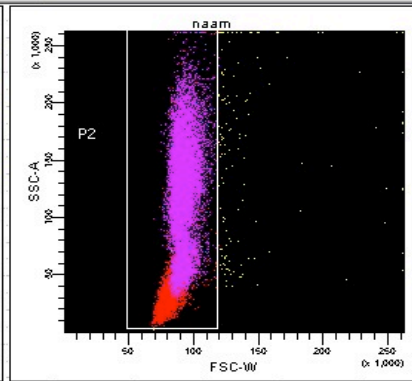
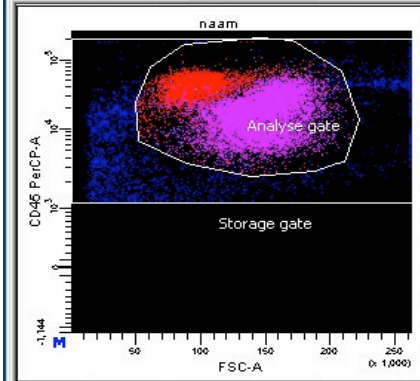


monocyten PNH 1-2009



erythrocyten PNH 1-2009





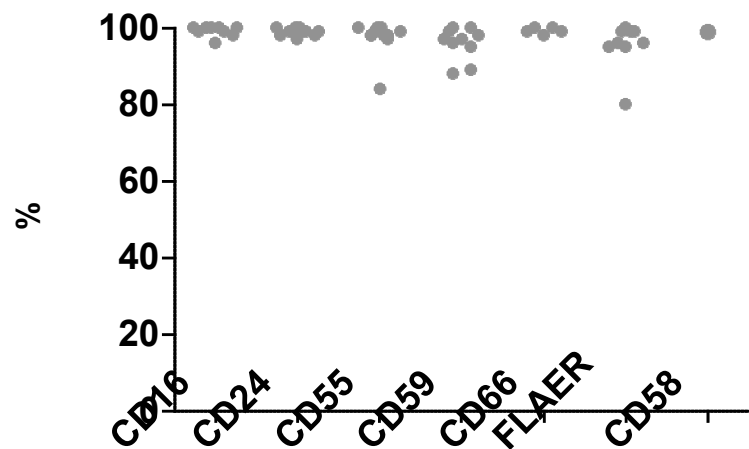
Tube: naam

Population	#Events	%Parent	%Total
All Events	105,467	###	100.0
Analyse gate	95,452	90.5	90.5
P2	94,817	99.3	89.9
MONOCYTEN	13,254	14.0	12.6
Q1	60	0.5	0.1
Q2	9	0.1	0.0
PNH MON	13,164	99.3	12.5
Q4	21	0.2	0.0
GRANULOCYTEN	45,150	47.6	42.8
Q1-1	107	0.2	0.1
Q2-1	101	0.2	0.1
PNH GRAN	44,688	99.0	42.4
Q4-1	254	0.6	0.2
Storage gate	105,443	100.0	100.0

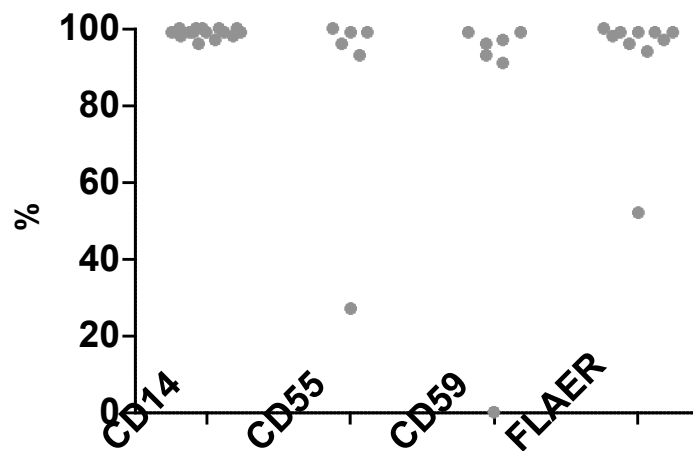
Experiment Name: PNH2 2009_001
 Specimen Name: LWPB
 Tube Name: naam
 Record Date: Jun 18, 2009 12:11:43 PM
 \$OP: LLDflow

Population	#Events	%Parent
All Events	105,467	###
Analyse gate	95,452	90.504
P2	94,817	99.335
MONOCYTEN	13,254	13.979
Q1	60	0.453
Q2	9	0.068
PNH MON	13,164	99.321
Q4	21	0.158
GRANULOCYTEN	45,150	47.818
Q1-1	107	0.237
Q2-1	101	0.224
PNH GRAN	44,688	98.977
Q4-1	254	0.563
Storage gate	105,443	99.977

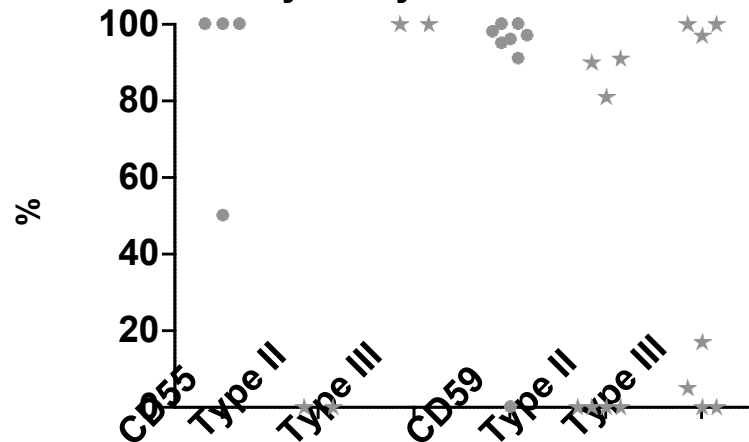
granulocyten PNH 2 2009

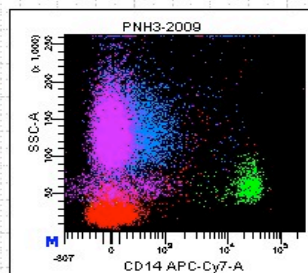
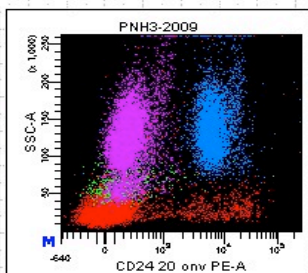
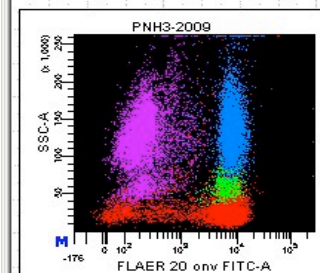
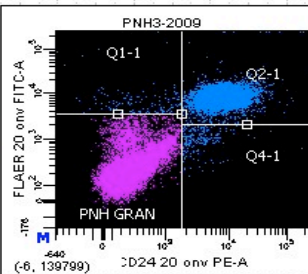
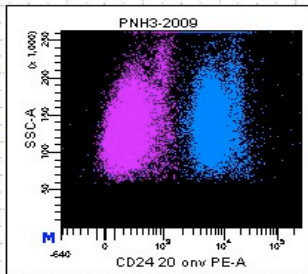
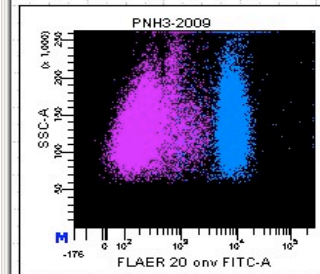
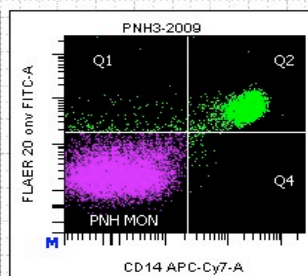
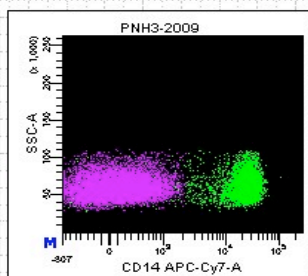
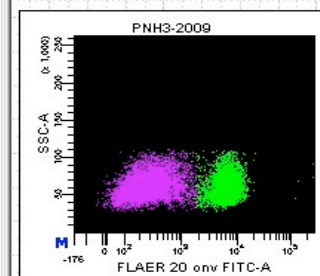
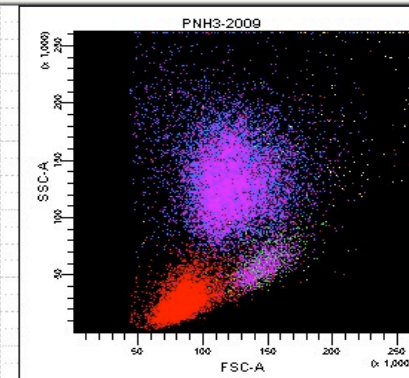
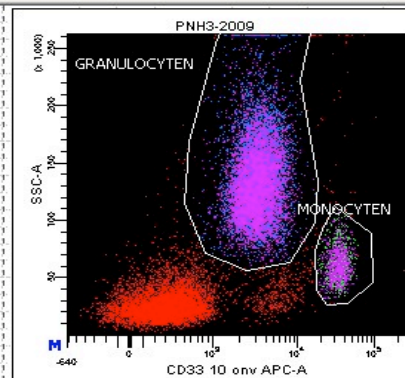
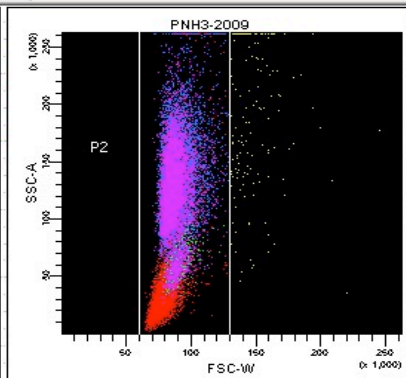
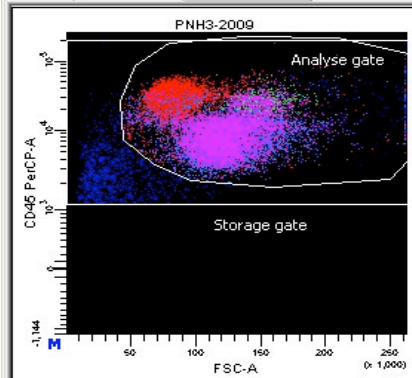


monocyten PNH 2-2009



erythrocyten PNH 2-2009





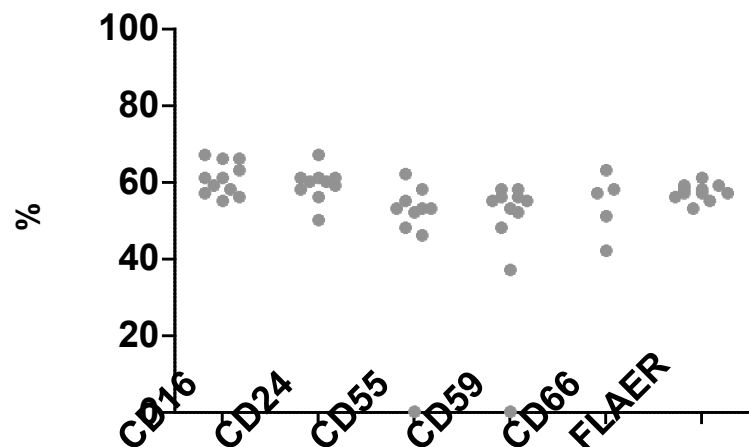
Tube: PNH3-2009

Population	#Events	%Parent	%Total
All Events	204,328	###	100.0
Analyse gate	195,697	95.8	95.8
P2	194,213	99.2	95.0
MONOCYTEN	14,444	7.4	7.1
Q1	172	1.2	0.1
Q2	5,884	40.7	2.9
PNH MON	8,339	57.7	4.1
Q4	49	0.3	0.0
GRANULOCYTEN	106,991	55.1	52.4
Q1-1	399	0.4	0.2
Q2-1	42,552	39.8	20.8
PNH GRAN	63,402	59.3	31.0
Q4-1	638	0.6	0.3
Storage gate	204,305	100.0	100.0

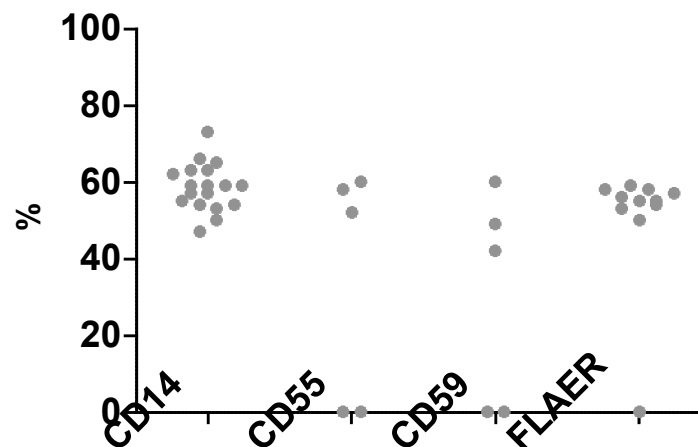
Experiment Name: PNH3-2009 150909_001
 Specimen Name: LWPB
 Tube Name: PNH3-2009
 Record Date: Sep 15, 2009 4:19:24 PM
 \$OP: LLDflow

Population	#Events	%Parent
All Events	204,328	###
Analyse gate	195,697	95.776
P2	194,213	99.242
MONOCYTEN	14,444	7.437
Q1	172	1.191
Q2	5,884	40.737
PNH MON	8,339	57.733
Q4	49	0.339
GRANULOCYTEN	106,991	55.090
Q1-1	399	0.373
Q2-1	42,552	39.772
PNH GRAN	63,402	59.259
Q4-1	638	0.596
Storage gate	204,305	99.989

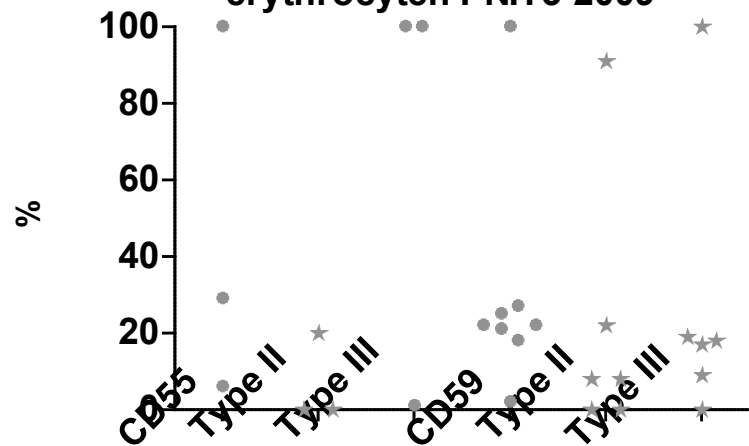
granulocyten PNH 3 2009

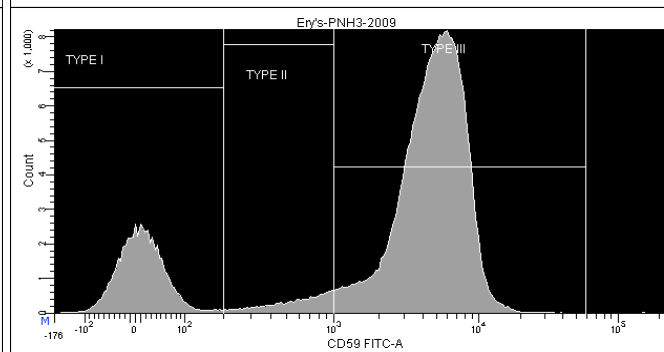
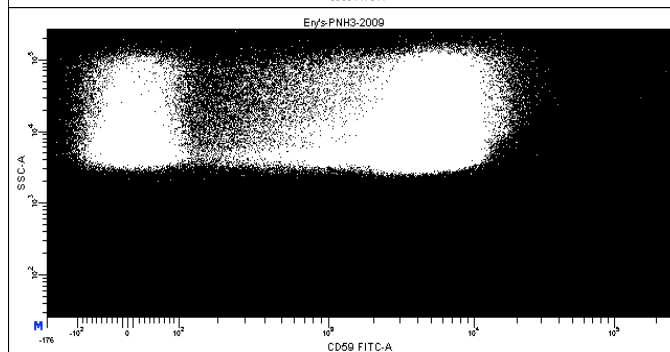
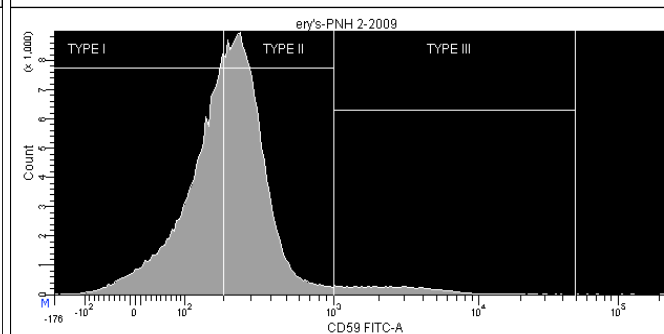
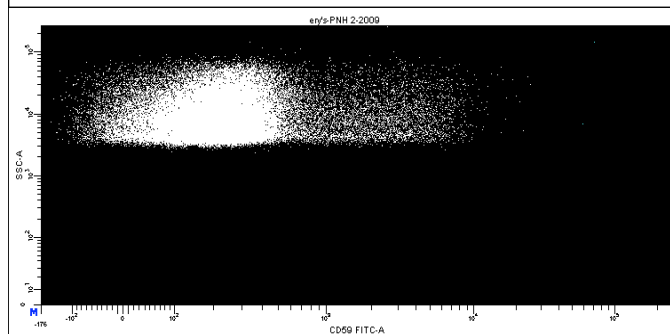
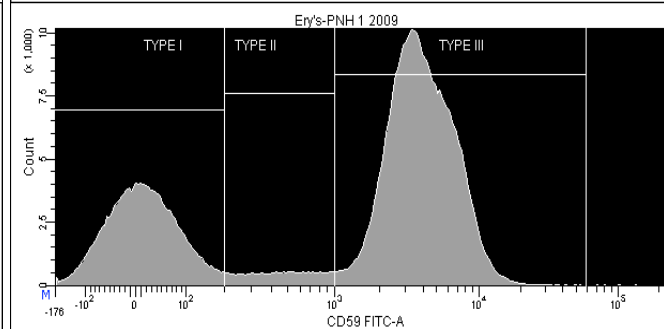
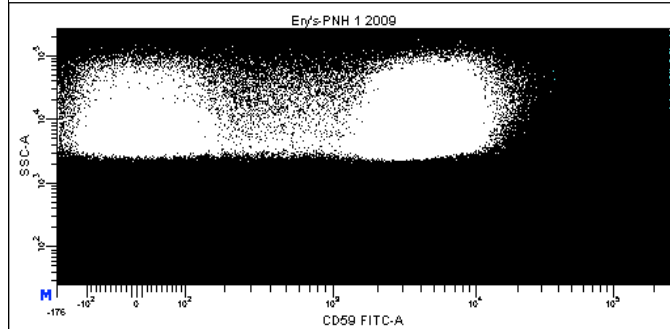
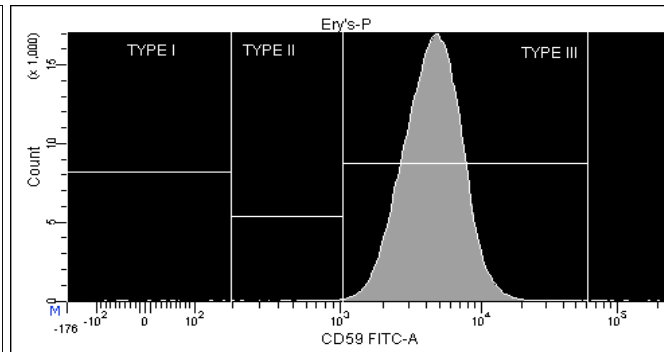
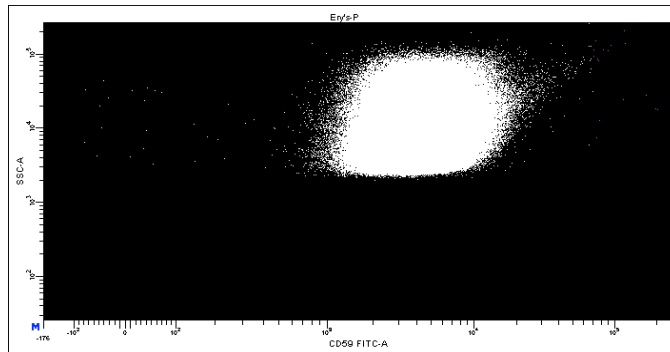


monocyten PNH 3-2009

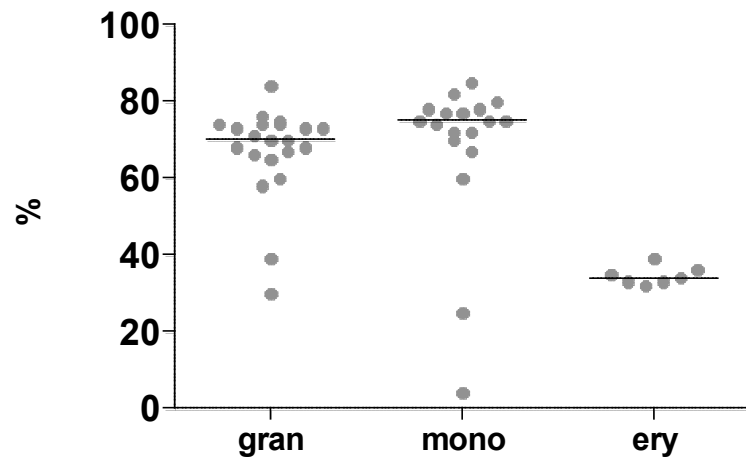


erythrocyten PNH 3-2009

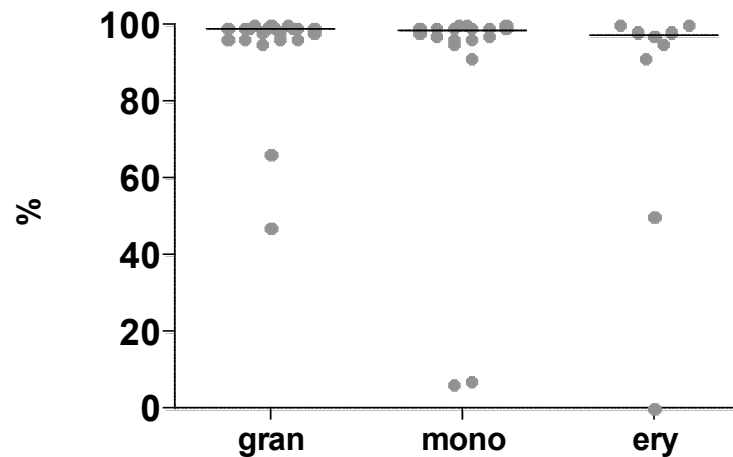




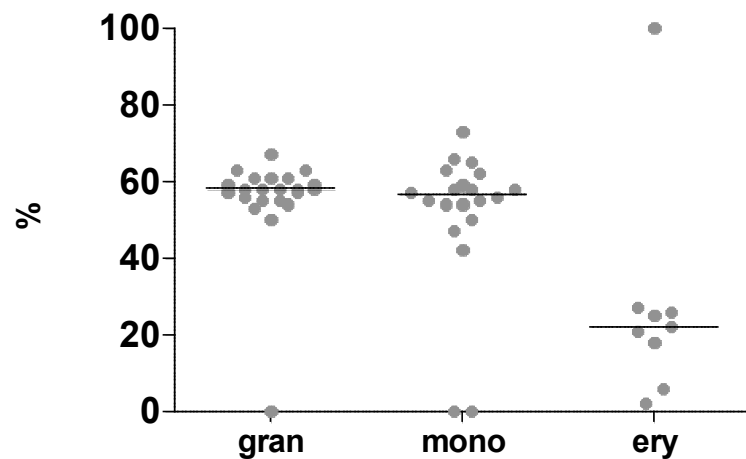
PNH 1-2009



PNH 2-2009



PNH 3-2009



Conclusie en toekomst



- Redelijk homogene uitslagen.
- Heterogeen wat methode betreft.
- Hoe rapporteren we terug naar de deelnemers.
- Aanbeveling voor methode en panel.
- Aanpassen rapportage formulier.