

Workshop Masterclass Flowcytometrie in MDS



Technische Aspecten

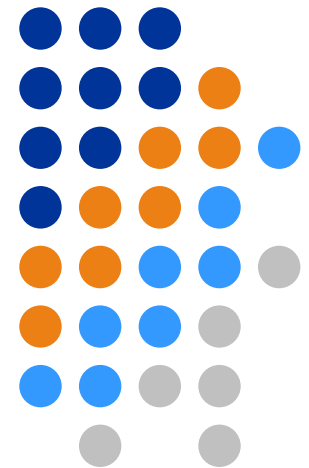
Sanquin, Amsterdam 5 september 2012

Anja de Jong ¹ / Ingrid Lommerse ² / Jeroen te Marvelde ³

¹ Stichting Kinderoncologie Nederland (Skion), Den Haag

² Immunocytologie Sanquin, Amsterdam

³ Afdeling Immunologie, Erasmus MC, Rotterdam



Haematologica 2009;94(8) Loosdrecht et al



- Standardization of flow cytometry in myelodysplastic syndromes; report from the first European LeukemiaNet working conference on flow cytometry in myelodysplastic syndromes.

Minimale variatie in/bij:

- Monster verwerking
- Antistof combinaties
- Data acquisitie
- Data interpretatie

Haematologica 2009;94(8) Loosdrecht et al



- Monster verwerking
 - Beenmerg (bij voorkeur)
 - Anticoagulans: heparine (bij voorkeur)
 - Verwerking binnen 24 uur (bij voorkeur)
 - Bewaren bij kamertemperatuur

Haematologica 2009;94(8) Loosdrecht et al



- Lysis rode bloedcellen
 - Ammoniumchloride (in huis of commercieel)
 - Bulklysis (géén ficoll scheiding)
 - 3 ml BM aanvullen tot 50 ml met NH₄Cl, 10 min bij KT op menger
- Voordelen:
 - Identieke celsuspensie én
 - Fixed celconcentraties in de verschillende buizen
- Wasbuffers en/of lyseervloeistoffen met fixatieven (bv PFA) niet gebruiken voor labelen
- Fixatief beïnvloedt scatter

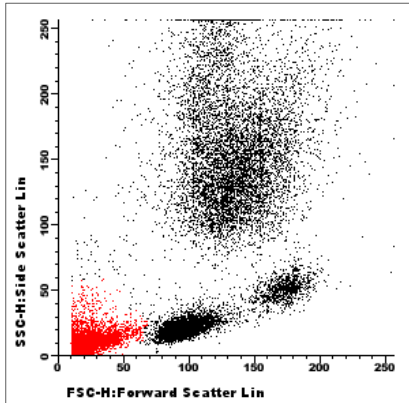
- Wassen met PBS + 0,5% bovine of humane serum albumine

Anticoagulans en Lyseer vloeistoffen



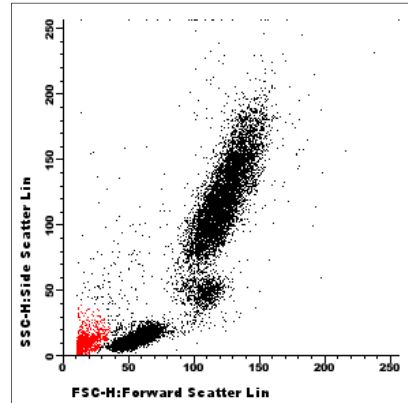
EDTA vers

NH4Cl home made



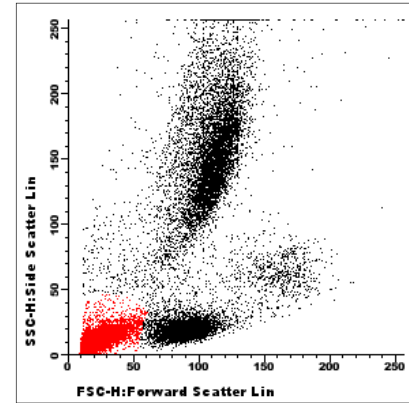
53%

FACS Lysing Sol. BD



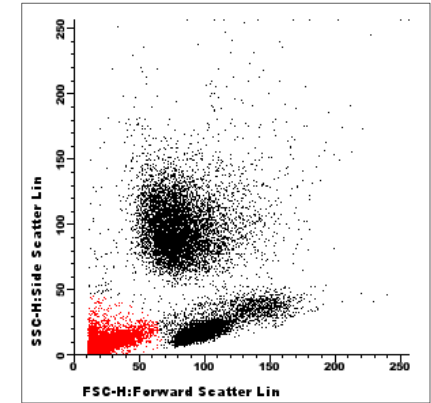
9%

QuickLysis Cytgnos



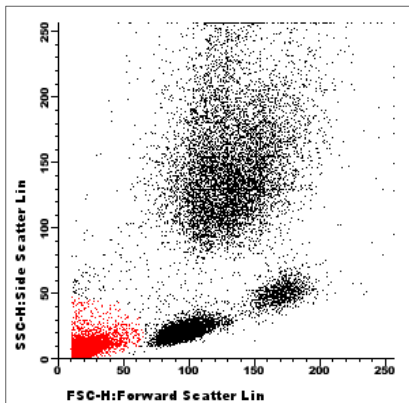
62%

VersaLysing Coulter

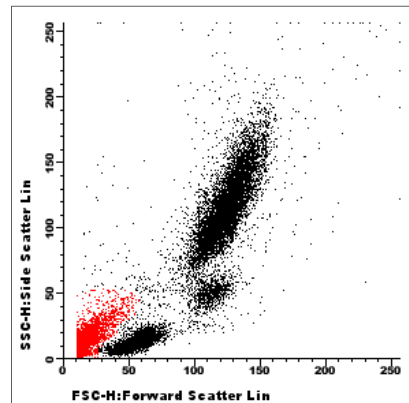


61%

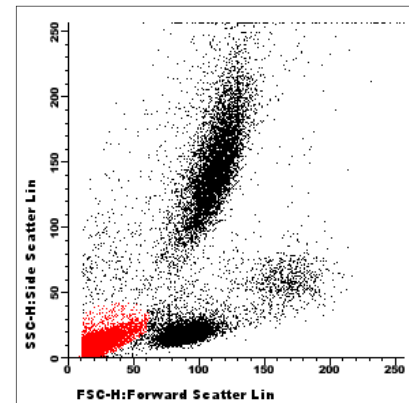
Heparine vers



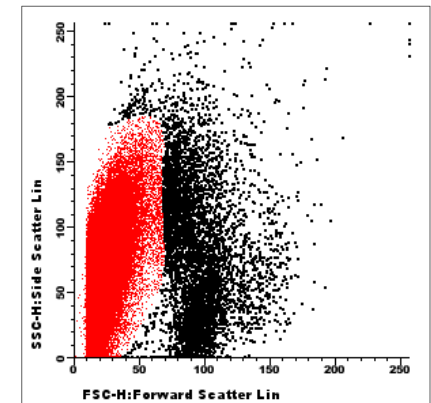
40%



18%



60%



97%

Anticoagulans en Lyseer vloeistoffen



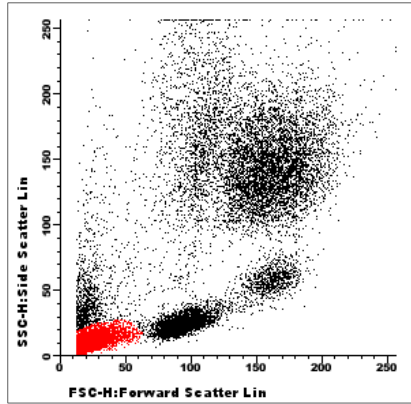
EDTA 24 uur

NH4Cl home made

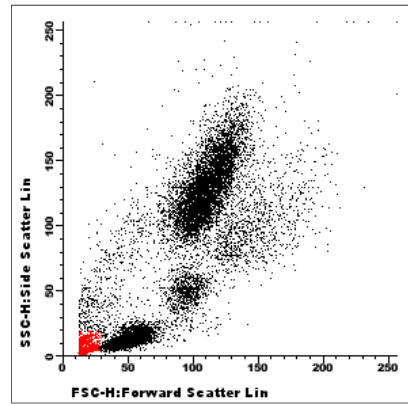
FACS Lysing Sol. BD

QuickLysis Cytognos

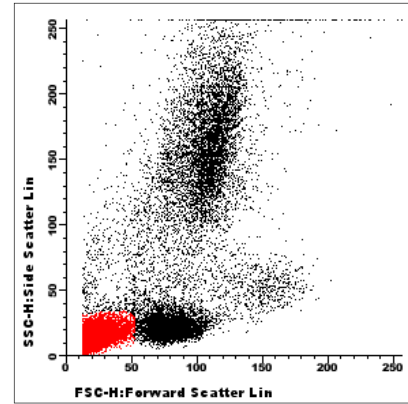
VersaLyse Coulter



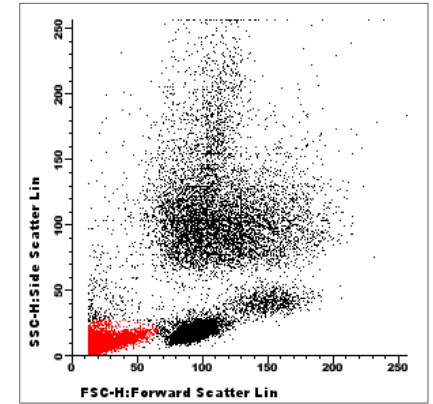
40%



6%

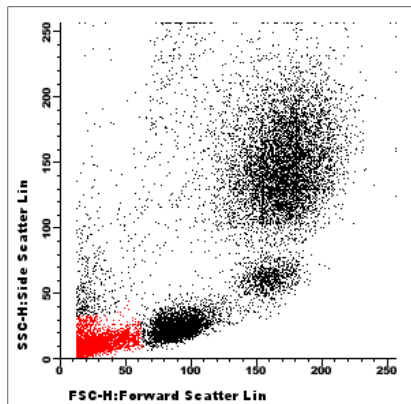


60%

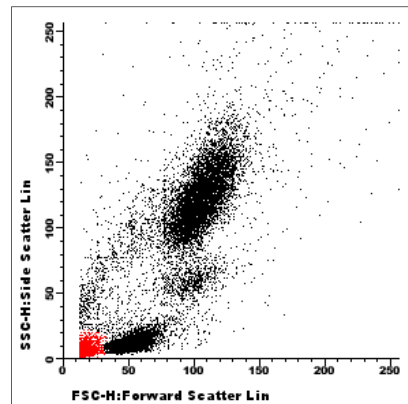


55%

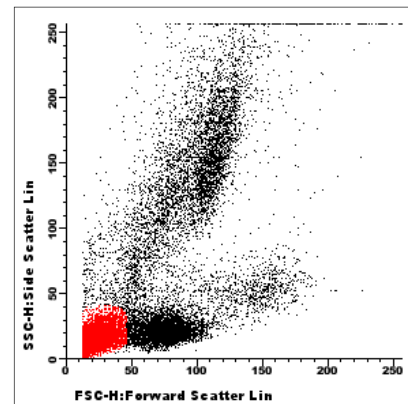
Heparine 24 uur



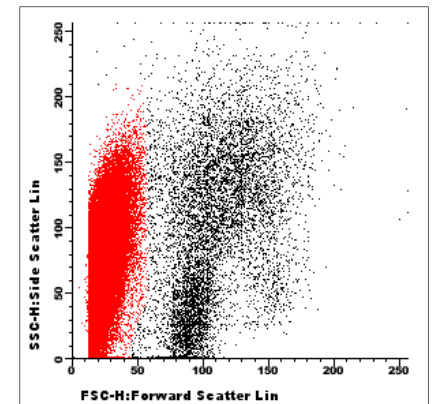
46%



6%



59%



97%



- Antistof labelingen
 - Label min. 500.000 cellen (50 ul van een 10×10^6 /ml suspensie)
 - Optimale titers van antistoffen gebruiken
 - Incubatie: 15 min bij kamertemperatuur in het donker
 - Wassen met PBS/BSA 0,5%
 - In het geval van intracellulaire kleuringen eerst de membraanlabeling uitvoeren gevolgd door de intracellulaire labeling.
 - Gebruik alleen bekende en geevalueerde fix/perm vloeistoffen
 - Meet bij voorkeur direct (<1 uur), of fixeer met 0.5% PFA in PBS (pH 7,4)
 - Meet tenminste 100.000 events



Haematologica 2009;94(8) Loosdrecht et al

- Aanbevolen antistof combinaties

Table 4. Proposed marker combinations for flow cytometry analysis of dysplasia in myelodysplastic syndromes.*

	Erythroid	Immature myeloid	Immature lymphoid	Maturing granulocytes	Monocytes	Mature lymphoid
CD71, CD235a, CD117	X					
CD105	(x)					
CD34,CD117	(x)	X				
CD11b, CD117				X		
CD11b, HLA-DR		X		X	X	
CD117, HLA-DR		X				
CD123, HLA-DR		(x)†		(x)‡		
CD34, CD15		X		X		
CD34, CD5		X		X	X	
CD34, CD7, (CD13 ⁶)		X		X	X	
CD34, CD56		X		X	X	
CD34, CD19		X	X	X	X	
CD10, CD19			(x)	X		
CD10, CD38			(x)			
CD11b, CD13, CD16				X		
CD65				(x)		
CD64, CD14					X	
CD64, CD36					(x)	
CD33, CD14		X		X	X	
CD33, CD36	(x) CD36	X			X	
TdT		(x)	(x)			
CD79a			(x)			
CD19 κ,λ						(x)**
CD3, CD4, CD8						(x)**

*CD45 is ubiquitous in every combination. X: minimally required, (x): supplementary. †Analysis of plasmacytoid DC (precursors), ‡analysis of basophils, §CD7 expression on myeloblasts can be normal, e.g. monocytic/dendritic precursors are CD13dim/CD7dim, **to complete immunological differential.

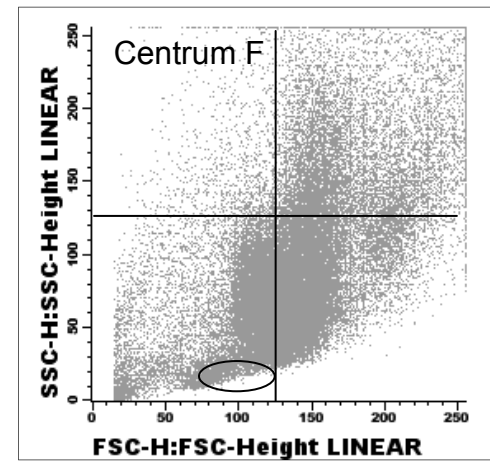
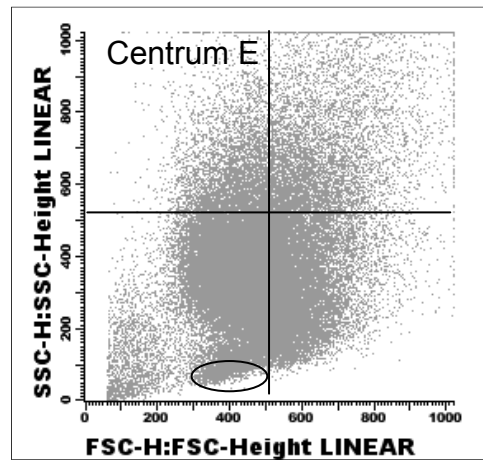
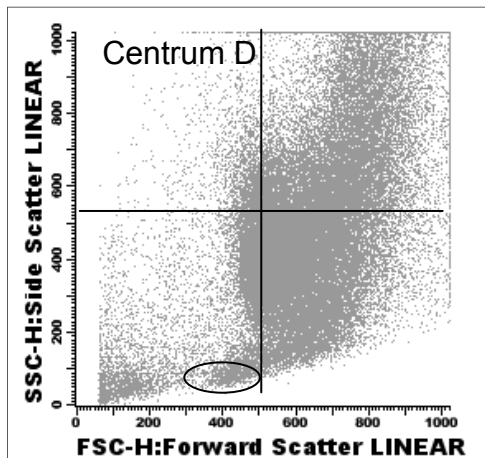
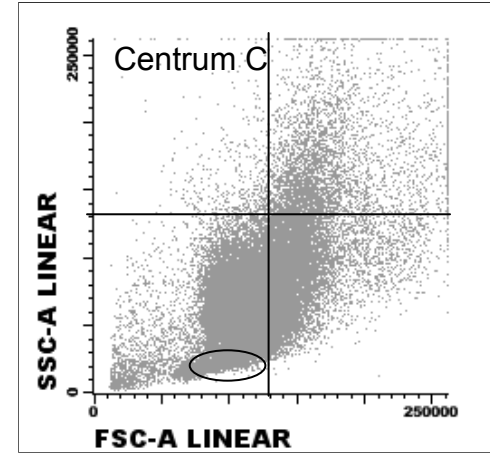
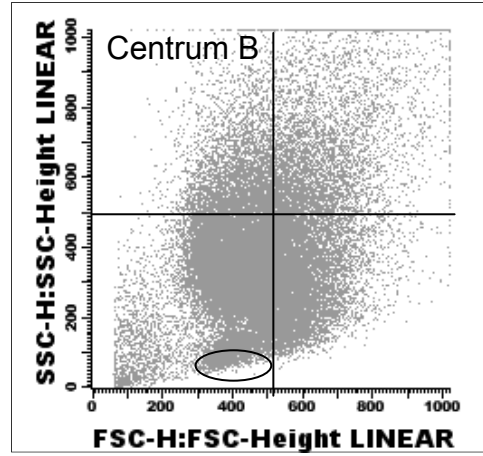
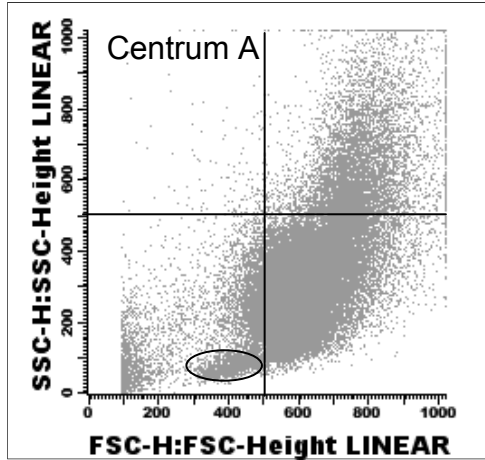
Valkuilen



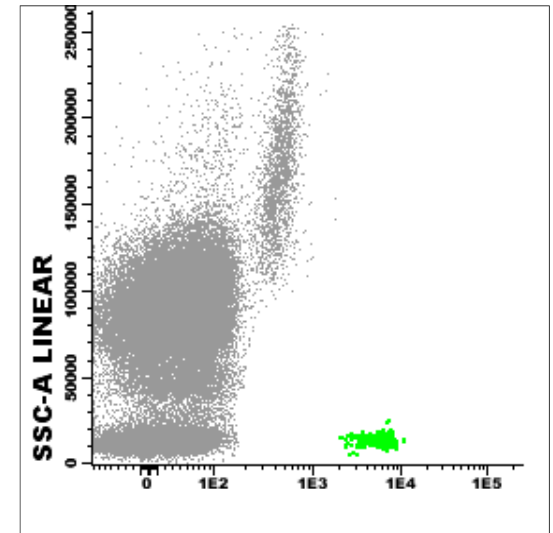
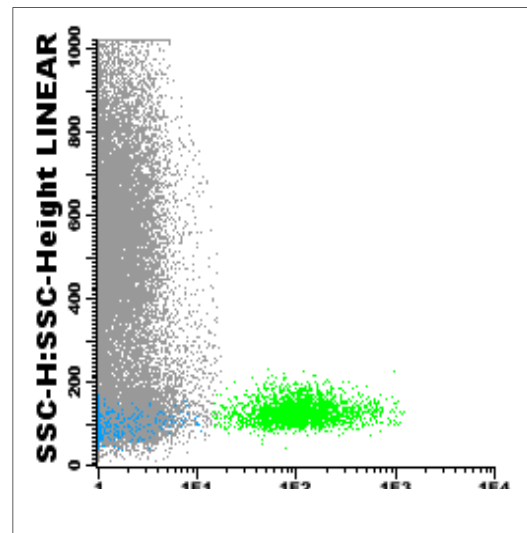
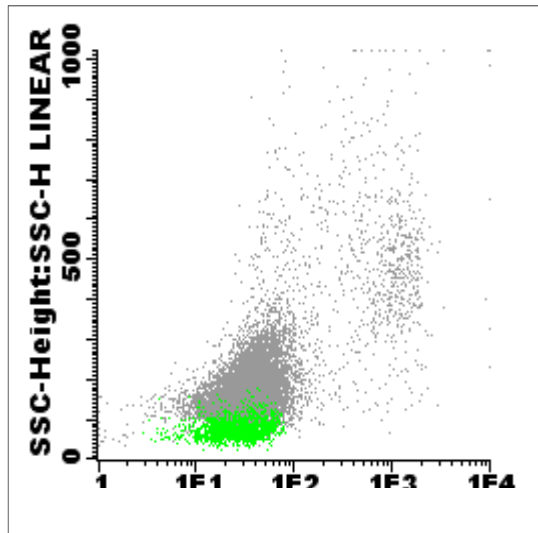
- Experimenteel

- Instrument Setup dia 10 - 24
 - Scatter
 - Fluorescentie
- Procedure dia 26 - 28
- Antistoffen dia 30 - 39
 - Fluorochromen
 - Clonen
 - Tandem Fluorochromen
 - Data Spread
- Fluorescentiepatronen dia 41 - 49

Discussie



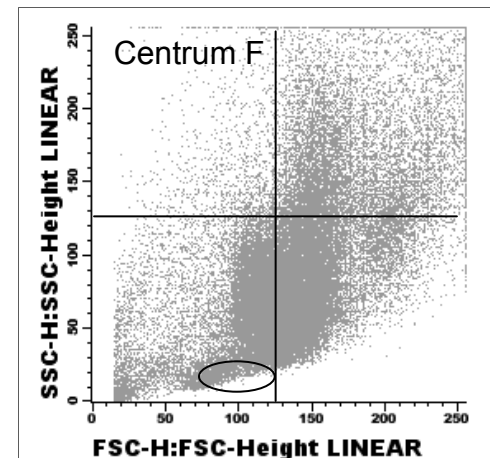
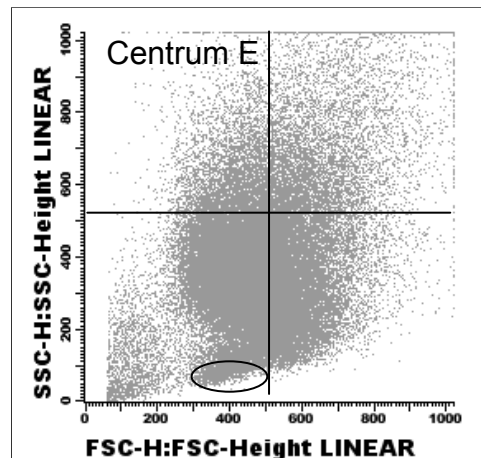
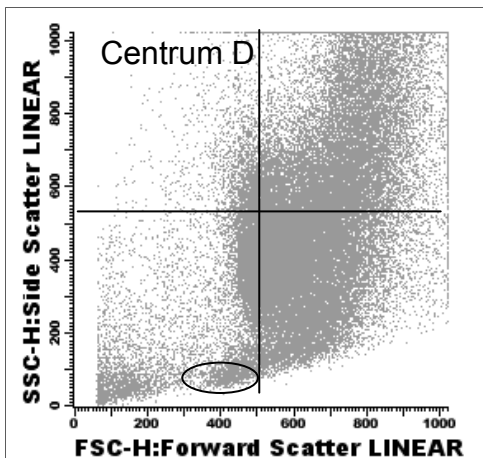
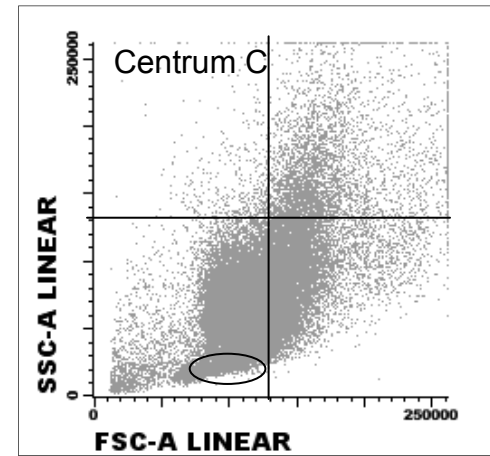
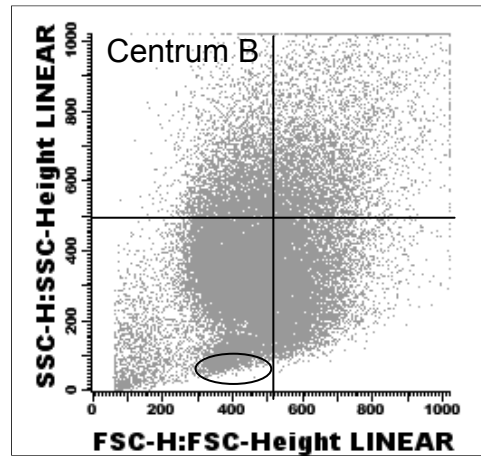
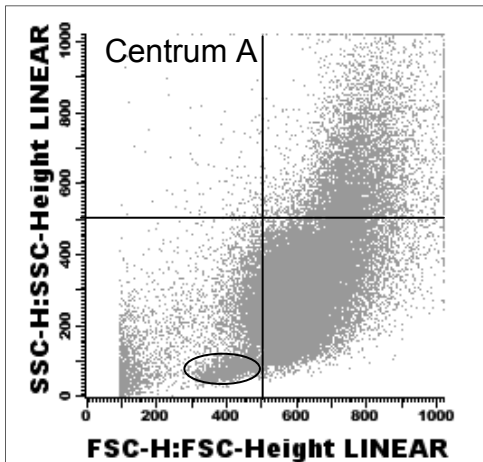
Discussie



Instrument Setup



- Scatterpatronen
 - 1 BM monster
 - 6 centra

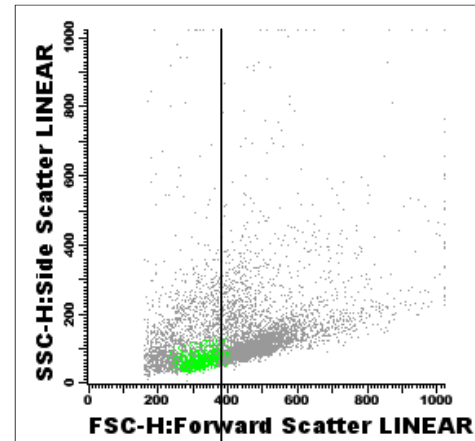
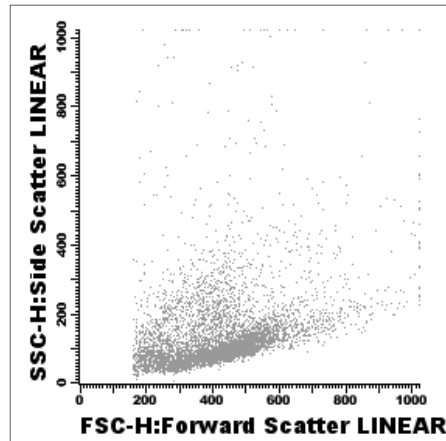


Instrument Setup

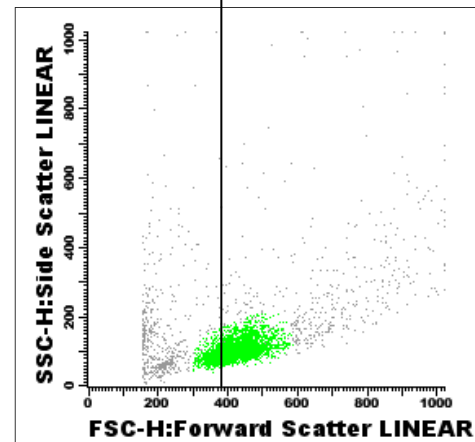
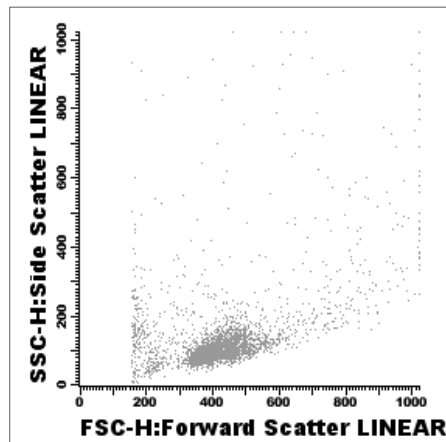


- Scatter
 - 1 centrum
 - 2 monsters zelfde patient, 2 tijdstippen

t = 1



t = 2

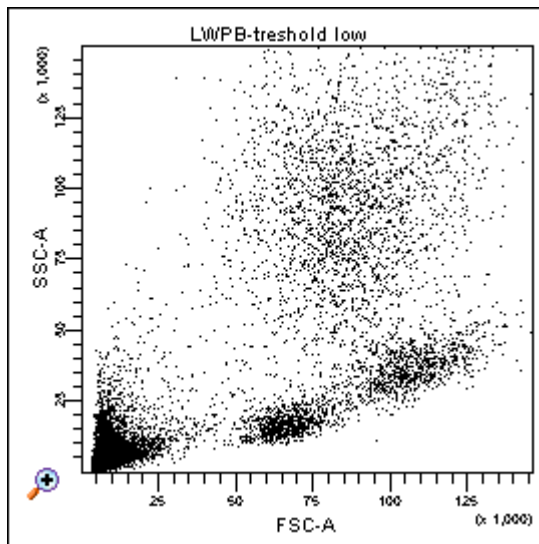


Lymfocytan

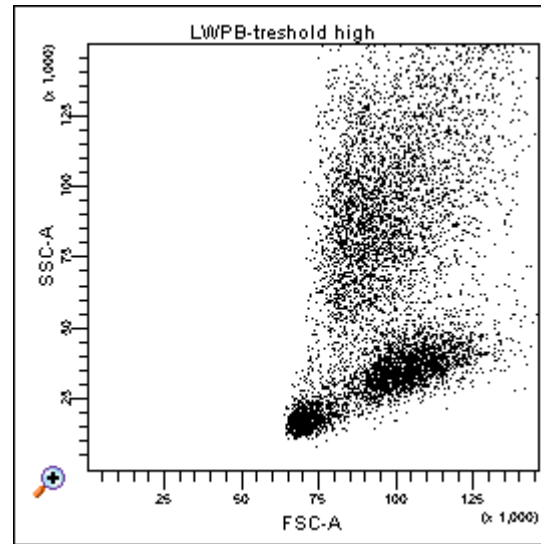
Instrument Setup



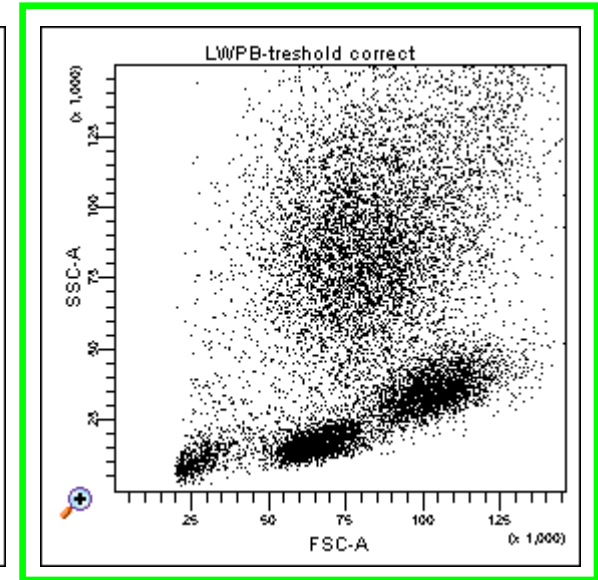
- Treshold



te laag



te hoog



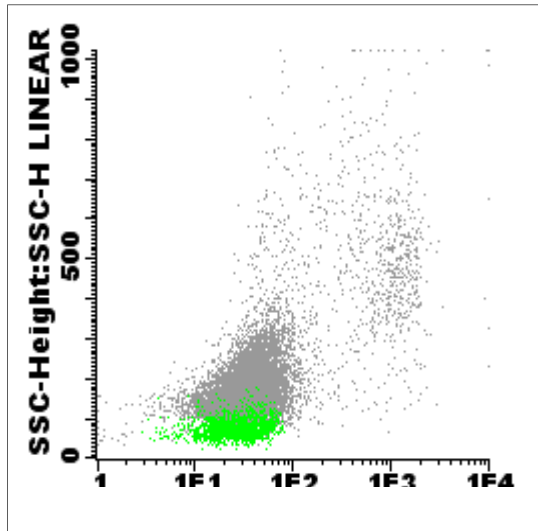
correct

- Debris zoveel mogelijk excluderen
- Leukocyten plus kernhoudend rood zoveel mogelijk includeren

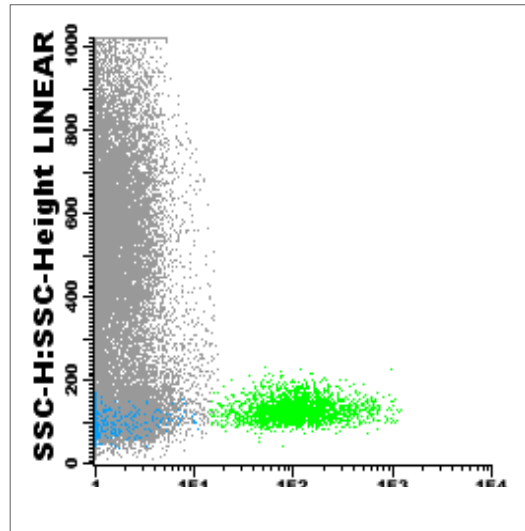
Instrument Setup



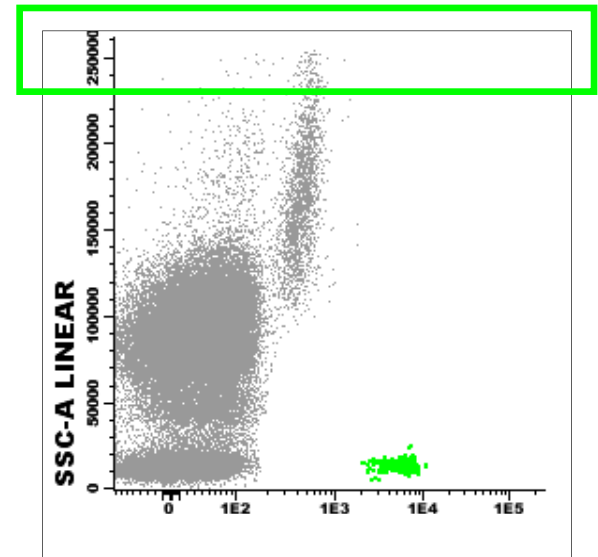
- Fluorescentie
 - PMT instelling
 - Sterk signaal
 - Lage achtergrond
 - Optimaal scheidend vermogen



te hoog



te laag



correct

Fluorescence - PMT

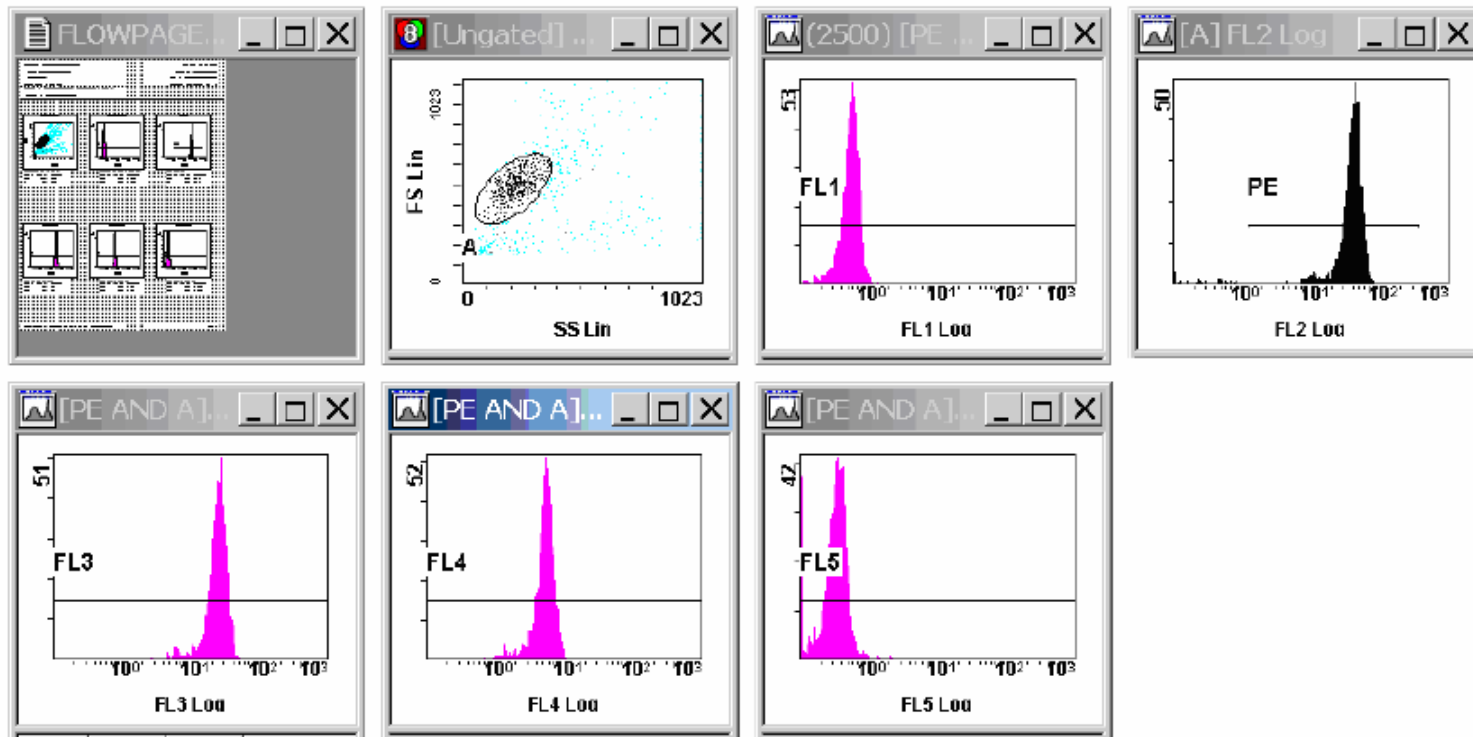


- Fluorescentie
 - PMT instelling
 - Cellen (Coulter)
 - CST: Cytometer Setup & Tracking Beads (BD)
 - Af fabriek (Accuri C6)
 - Target MFI for 8-pk Rainbow Beads

Fluorescence - PMT

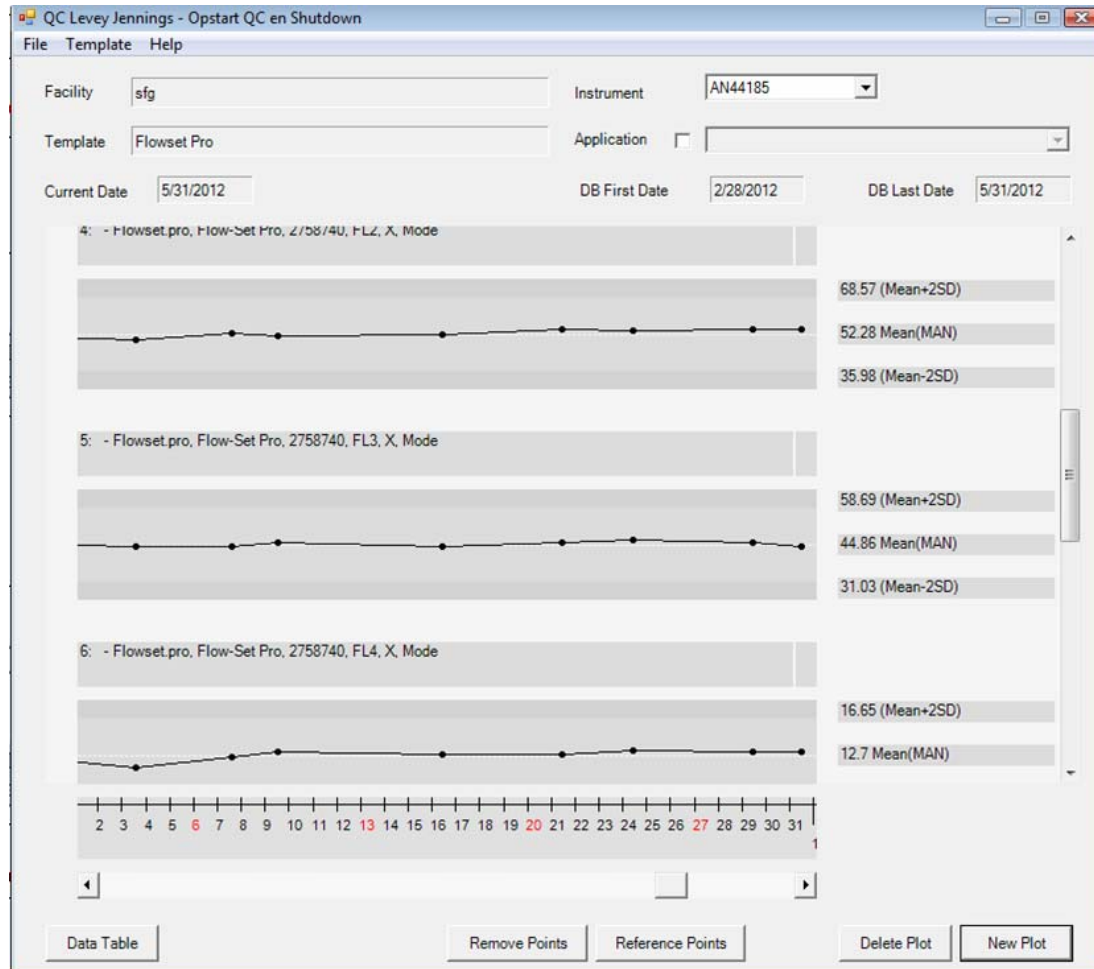


- Cellen



Flow-Set Pro Fluorophores

- Performance check



CST beads

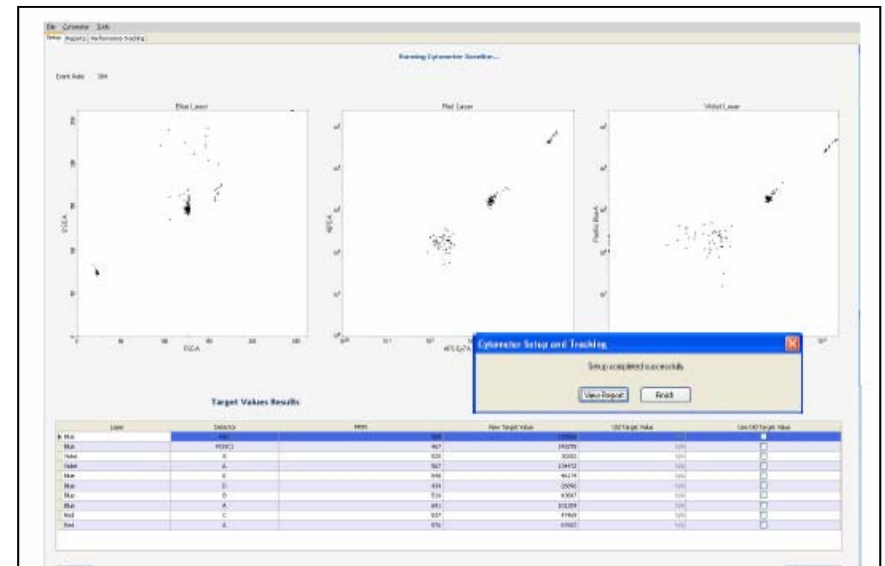


- CST: Cytometer Setup & Tracking Beads

Setup Beads

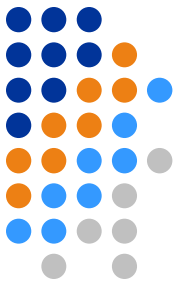


Bead	Baseline (TS/AS&Admin)	Daily (Admin&Operator)
Dim	<ul style="list-style-type: none"> • Background (B) • PMT voltages 	<ul style="list-style-type: none"> • Background (B) • PMT voltages • rCV*
Mid	<ul style="list-style-type: none"> • Sensitivity (Q) • Linearity 	<ul style="list-style-type: none"> • Sensitivity (Q)
Bright	<ul style="list-style-type: none"> • Linearity • Laser Delay • Mean Target values 	<ul style="list-style-type: none"> • Laser Delay • Area Scaling • Adjust PMT voltages to target MFI



CST beads

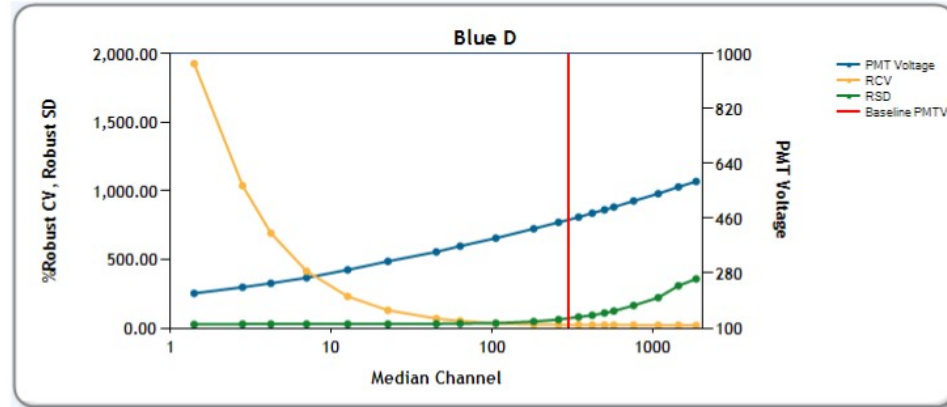
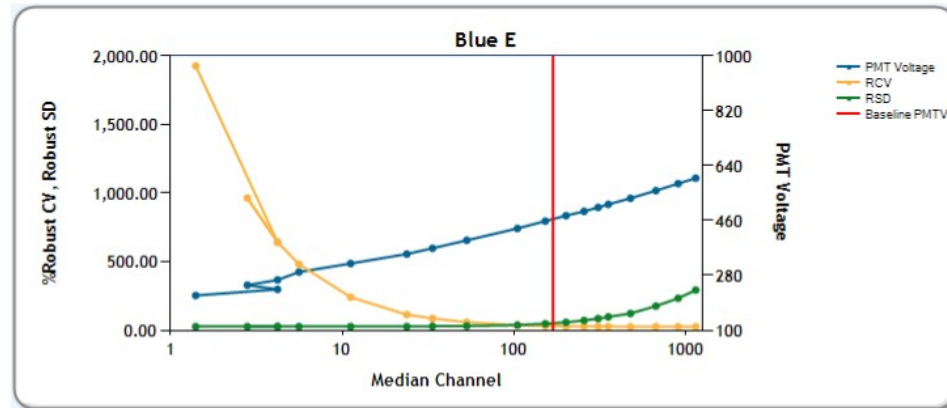
■ Baseline Report



Cytometer Baseline Report

Cytometer:	FACSCantoII	User:	Administrator
Cytometer Name:	FACSCantoII ErasmusMC	Institution:	N/A
Serial Number:	V96300046	Software:	BD FACSDiva 6.1.1
Input Device:	Manual	Date:	04/28/2009 03:12 PM
Cytometer Configuration:	EuroFlow config 3-laser, 8-color (4-2-2)		

PMTV Optimization Results



→ Optimal PMT to maximize resolution between populations

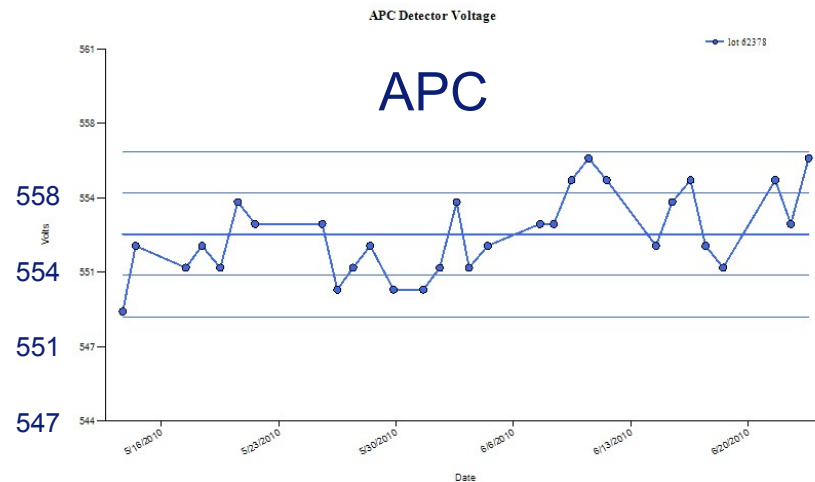


CST beads

- Performance check

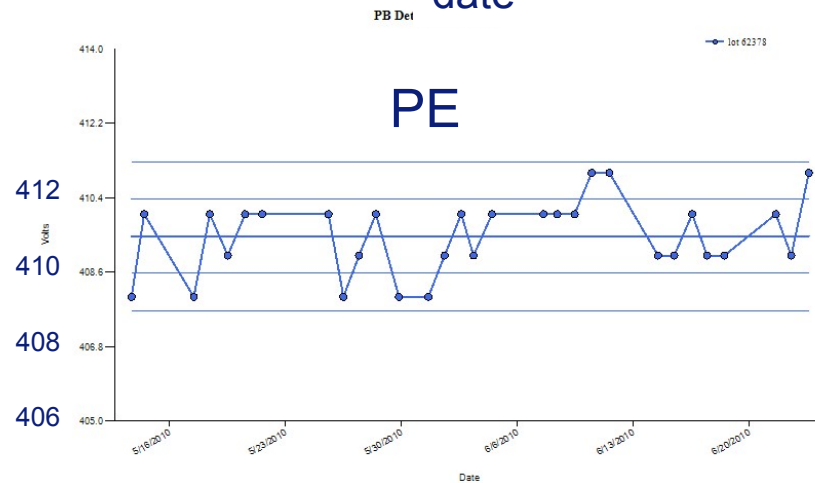


PMT



date

PMT



date

Adjustment of PMT

Fluorescence - PMT



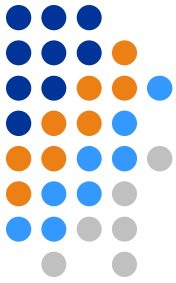
Alternatief voor CST beads:

- Target MFI for 8-pk Rainbow beads

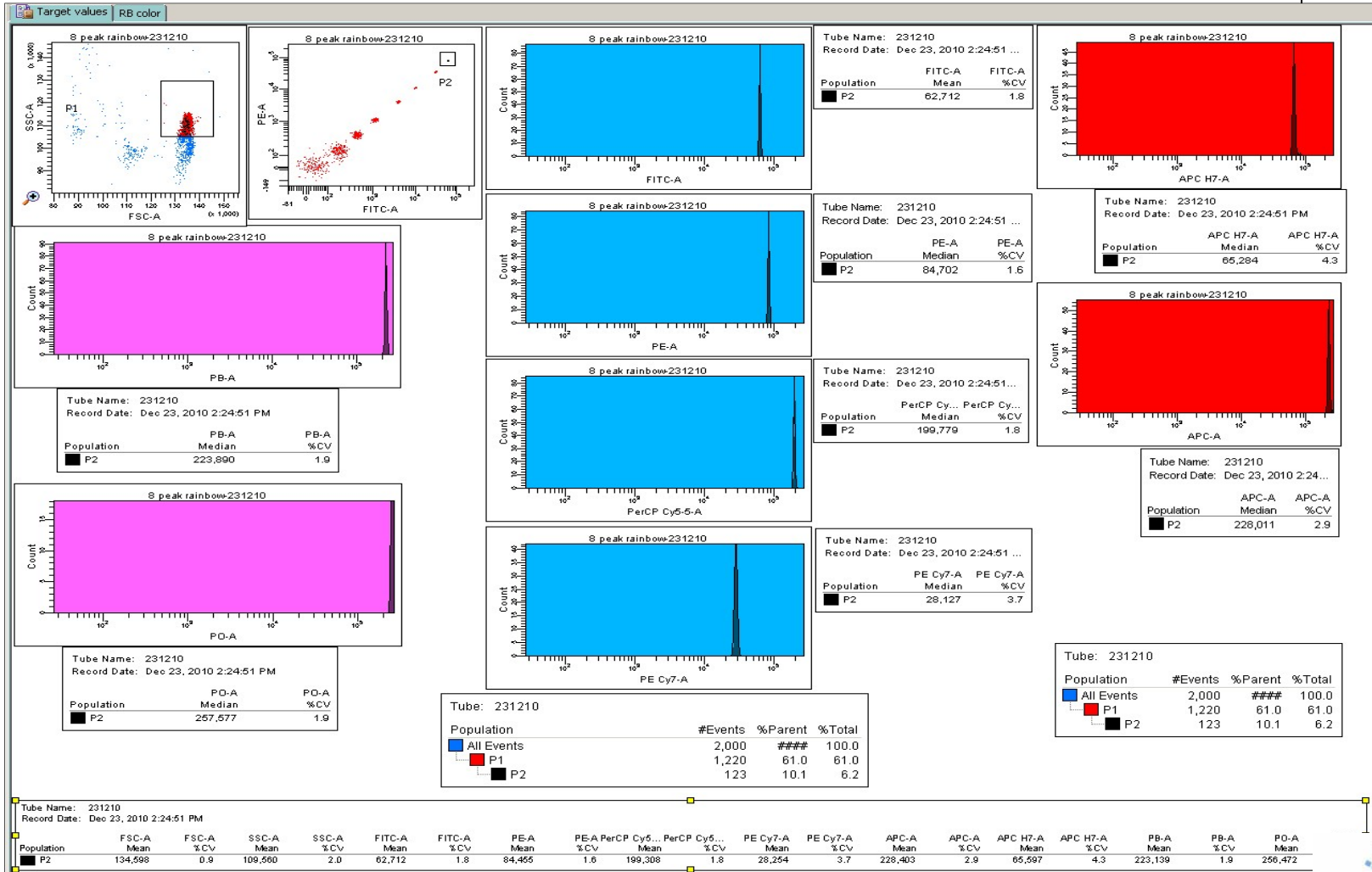
2010	Table 3.		<i>Target MFI</i>	
NEW MASTER LOT		<i>Lower MFI (-15%)</i>	<i>Rainbow 8-peak (DiVa)</i>	<i>Upper MFI (+15%)</i>
Lot: 41610	Pacific Blue	183,049	215,352	247,655
	Pacific Orange	185,222	217,908	250,594
	FITC	55,491	65,283	75,075
	PE	72,120	84,847	97,574
	PerCP	194,495	228,818	262,000
	PC7	25,385	29,865	34,345
	APC	214,200	252,000	289,800
	APC-H7	86,784	102,099	117,414

Batches/Lots prepared from Masterlot 41610 at Spherotech are labeled as "EAB01" where "E" means "Euroflow"
 If you have any doubts, ask Brian Shah (bshah@spherotech.com) or Marta M. Ayuso (mmartin@cytognos.com)

8-pk Rainbow beads

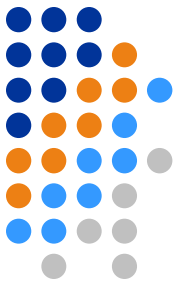


- Adjust PMT to reach target MFI

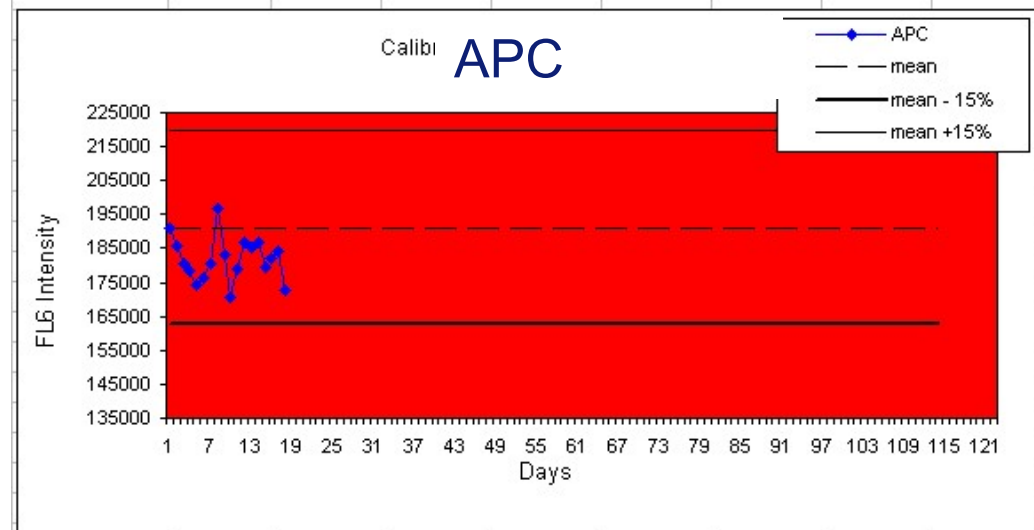


8-pk Rainbow beads

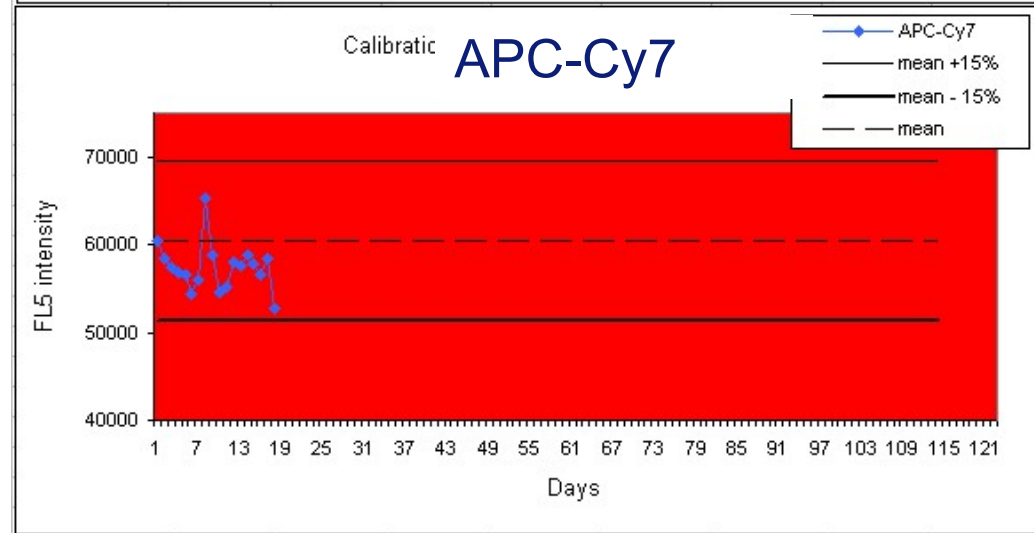
- Daily performance check



MFI



MFI

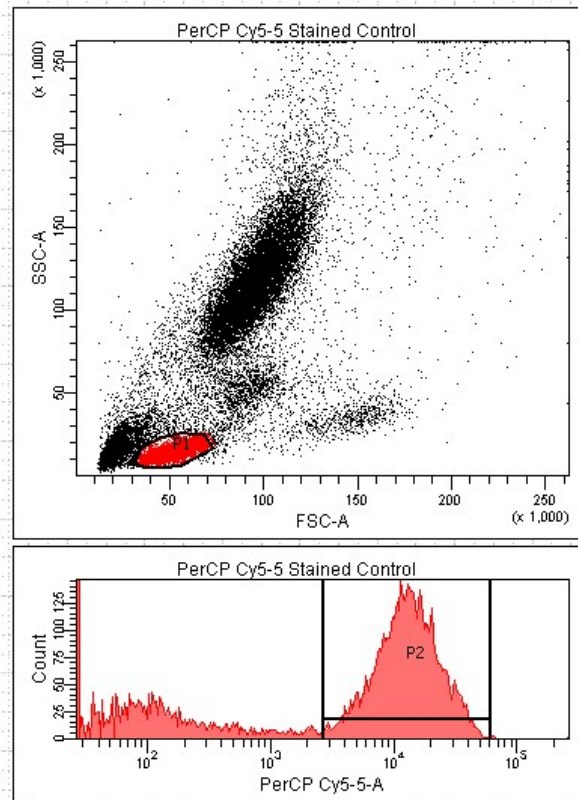


No adjustment of PMT

Compensation controls



- SST: single stained tubes
 - Cells, CompBeads or a combination of both
 - PMT: CST or EF (8-pk Rainbow beads)



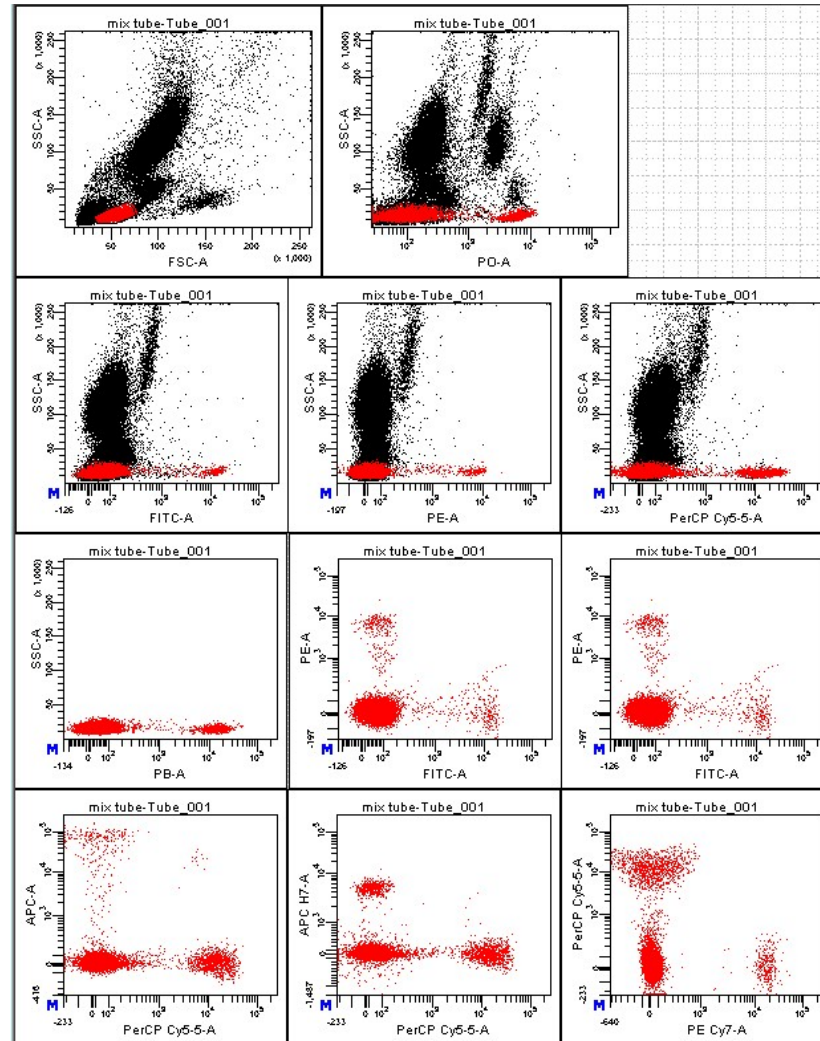
Compensation Matrix

- Mixture of SST's



Correct compensation matrix

Opmerking: generic vs specific



→ Instrument Settings: Scatter, PMT and compensation

Advanced Digital Compensation



- Automatische compensatie

Cytometer Control

Acquisition Setup | Compensation

Settings

Blue

Red

Violet

Details

Setup Mode

Dots:

QuickCOMP

QuickSET

Baseline Offset

Parameters

	Label	Discr.	Volts	Gain
FS	FS	80	205	5.0
SS	SS	OFF	202	7.5
FL1	FL1	OFF	440	1.0
FL2	FL2	OFF	438	1.0
FL3	FL3	OFF	459	1.0
FL4	FL4	OFF	484	1.0
FL5	FL5	OFF	460	1.0
FL6	FL6	OFF	431	1.0
FL7	FL7	OFF	420	1.0
FL8	FL8	OFF	411	1.0
FL9	FL9			
FL10	FL10			

Limits

Acquisition Time: Maximum Events:

Elapsed Time: Live Gate:

Max Acquirable Events: 2,100,000

Set Times

Close Help

Cytometer Control

Acquisition Setup | Compensation

	FL1	FL2	FL3	FL4	FL5	FL6	FL7	FL8	FL9	FL10
FL1		1.0	0.3	1.7	0.4	0.0	0.0	0.0		
FL2	19.8		11.0	6.0	9.3	0.0	0.1	0.1		
FL3	5.0	33.4		2.2	2.0	0.0	0.0	0.0		
FL4	0.3	2.7	12.5		0.2	0.3	0.4	0.0		
FL5	0.0	0.4	2.1	28.0		0.0	0.3	1.1		
FL6	0.0	0.0	0.1	1.9	0.0		12.7	9.0		
FL7	0.0	0.0	0.2	18.3	0.4	33.7		10.8		
FL8	0.0	0.0	0.0	8.3	8.6	8.4	27.6			
FL9										
FL10										

Select the column which contains the Fluorochrome creating spectral overlap in the PMT (row).

Clear All

Close Help

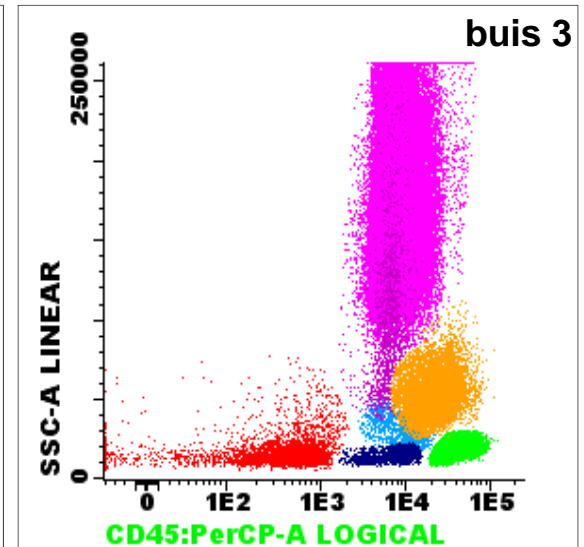
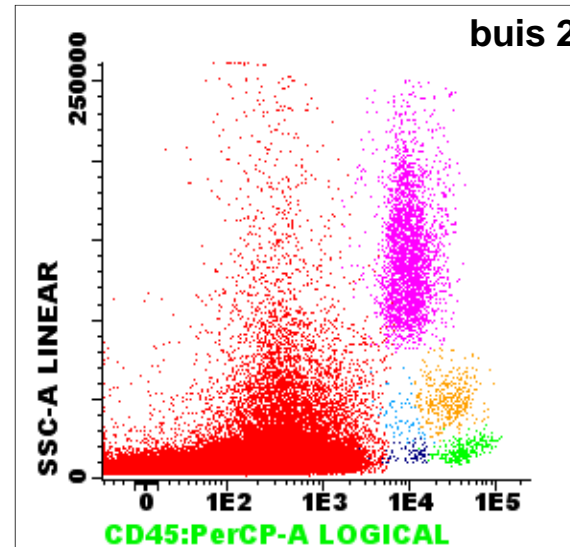
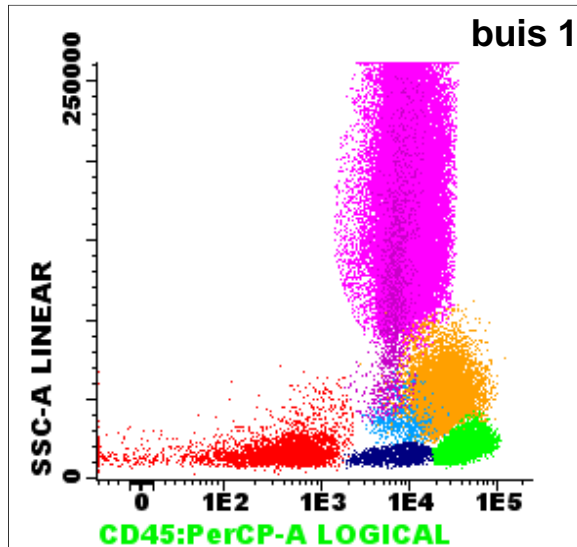
Correct compensation matrix

Valkuilen



- Experimenteel
 - Instrument Setup
 - Scatter
 - Fluorescentie
 - Procedure
 - Antistoffen
 - Fluorochromen
 - Clonen
 - Tandemfluorochromen
 - Data Spread
 - Fluorescentiepatronen
- Data interpretatie

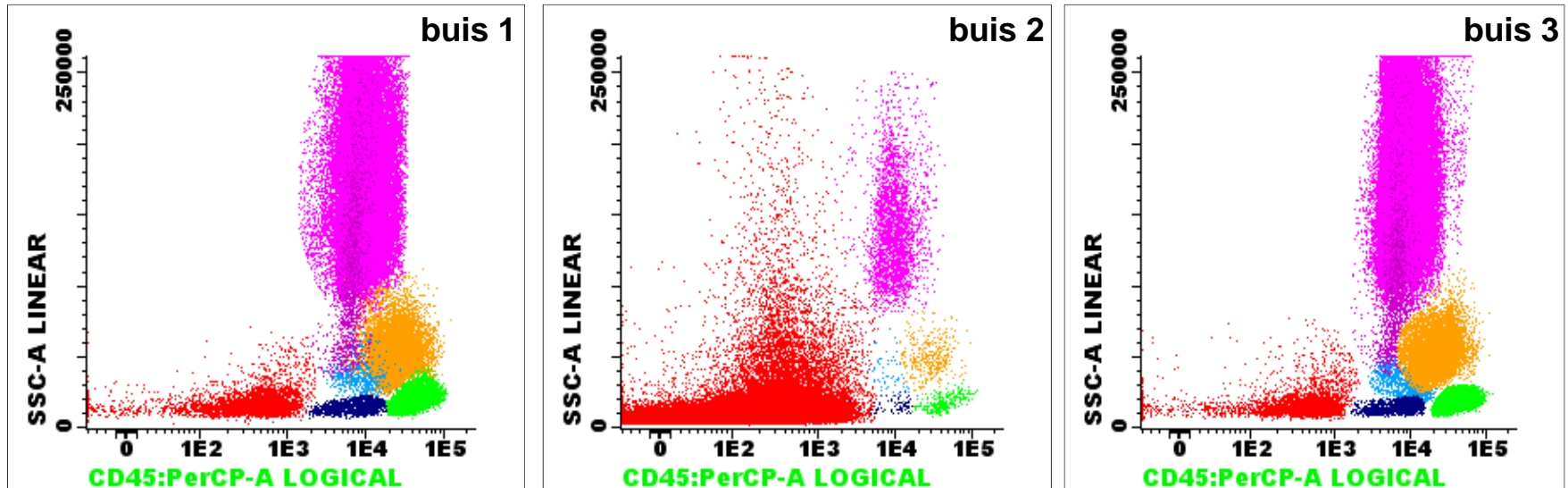
Discussie



Procedure



- Stain-Lyse-Wash
- Buis per buis lysis

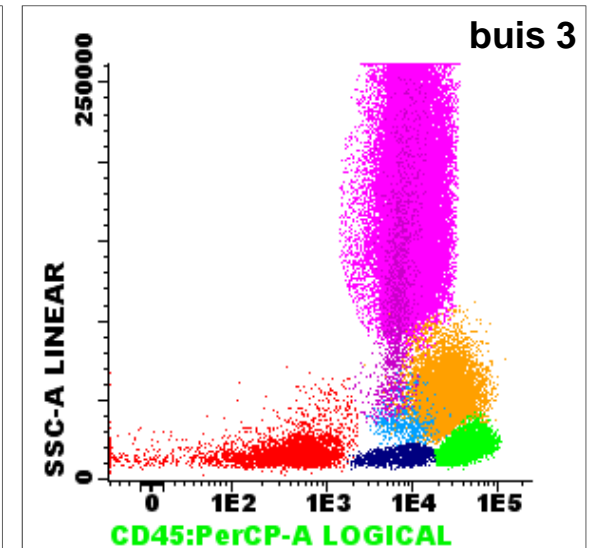
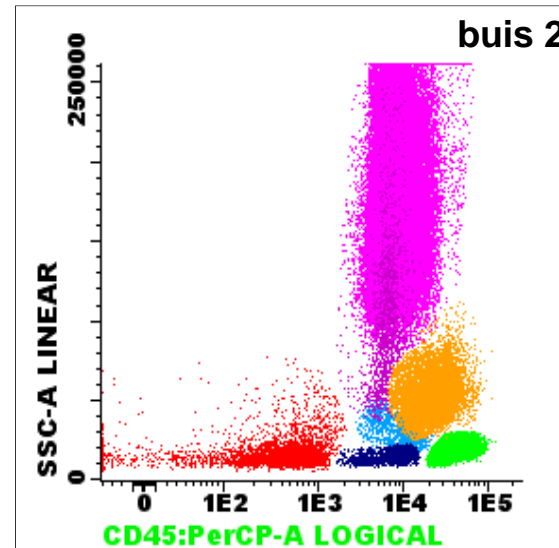
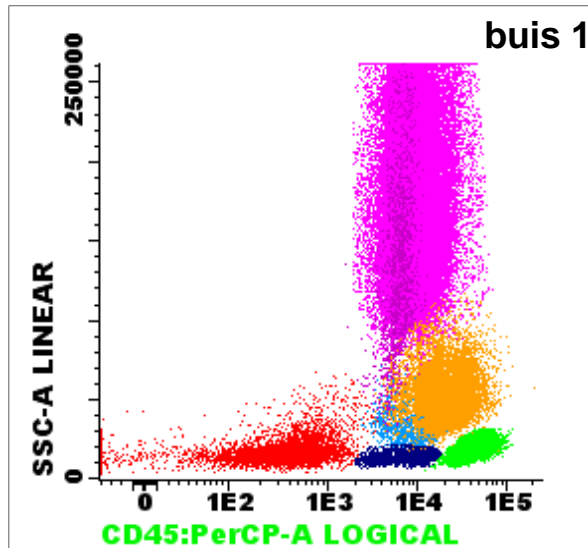


Buis tot buisvariaties door:

- Kans op het meepipetteren van een stolsel is groter
- Ongelijke erylisis
- Wegvangen van moabs door niet gelyseerd rood (bv CD235a)
- Geen constant aantal leucocyten per buis dus detectielimiet ongelijk

Procedure

- Lyse-Stain-Wash
- Bulklysis



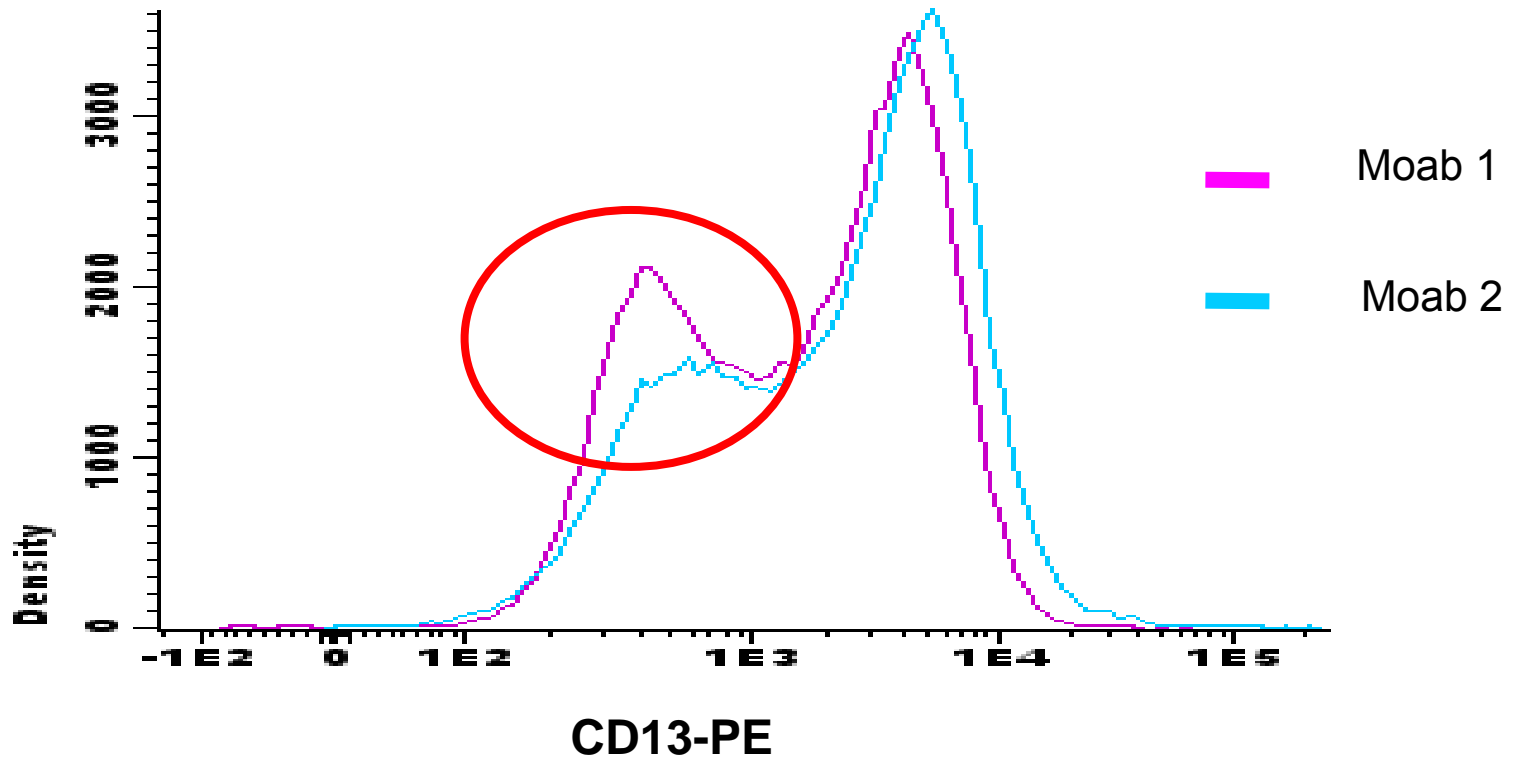
Nagenoeg geen buis tot buisverschillen

Valkuilen

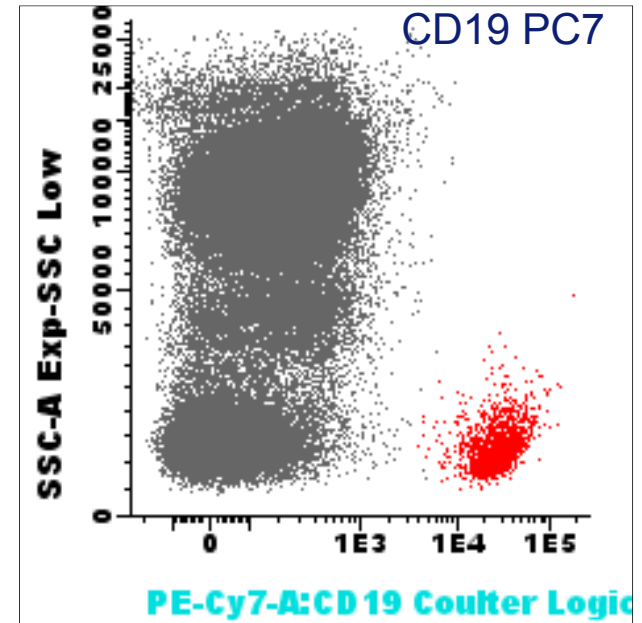
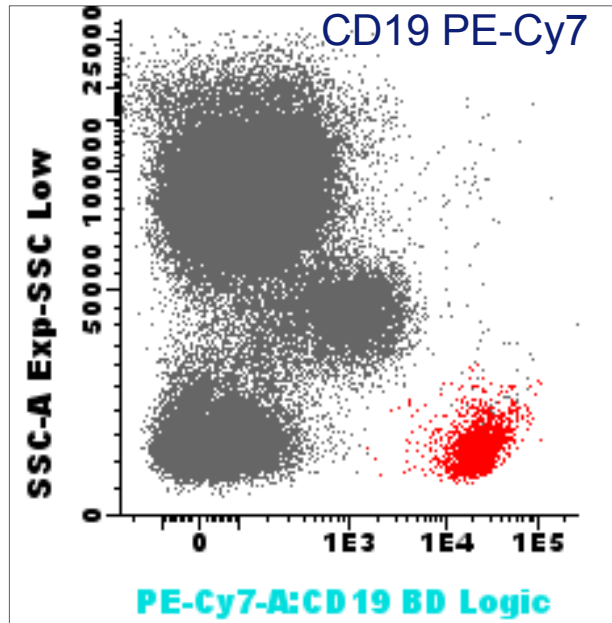


- Experimenteel
 - Instrument Setup
 - Scatter
 - Fluorescentie
 - Procedure
 - Antistoffen
 - Fluorochromen
 - Clonen
 - Tandemfluorochromen
 - Data Spread
 - Fluorescentiepatronen
- Data interpretatie

Discussie



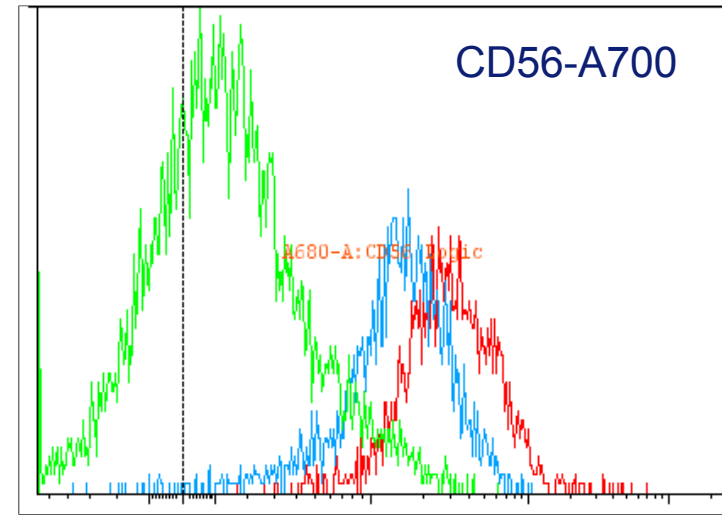
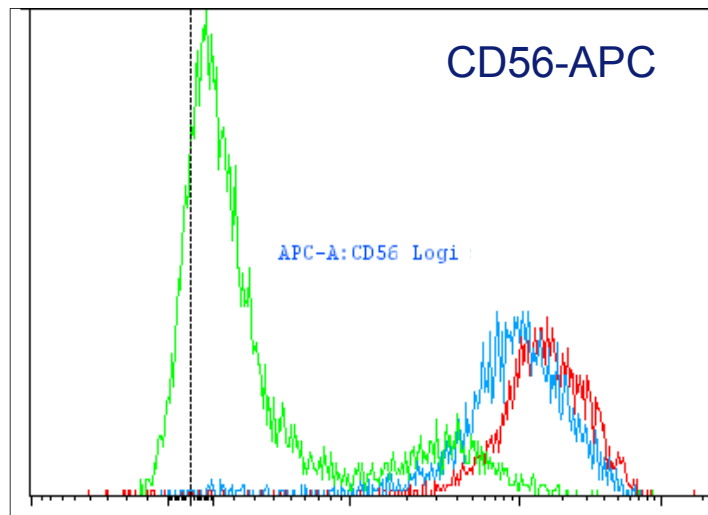
Discussie



Antistoffen



- Fluorochromen



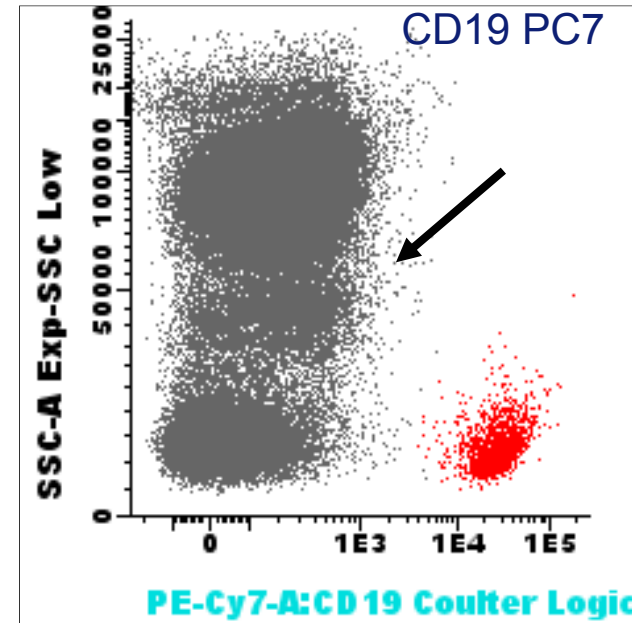
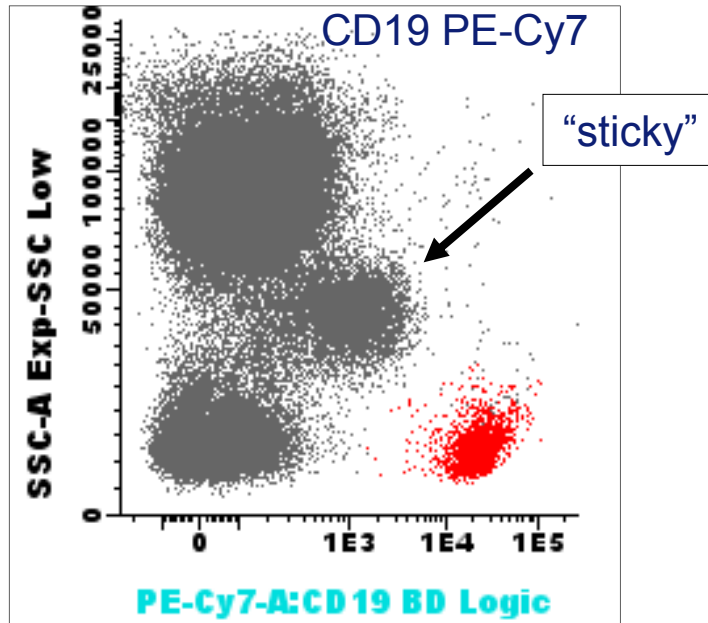
↑
Nk cellen

- Voor expressie van CD56 op blasten is een voldoende sterke fluorescentie nodig

Antistoffen



- Fluorochromen

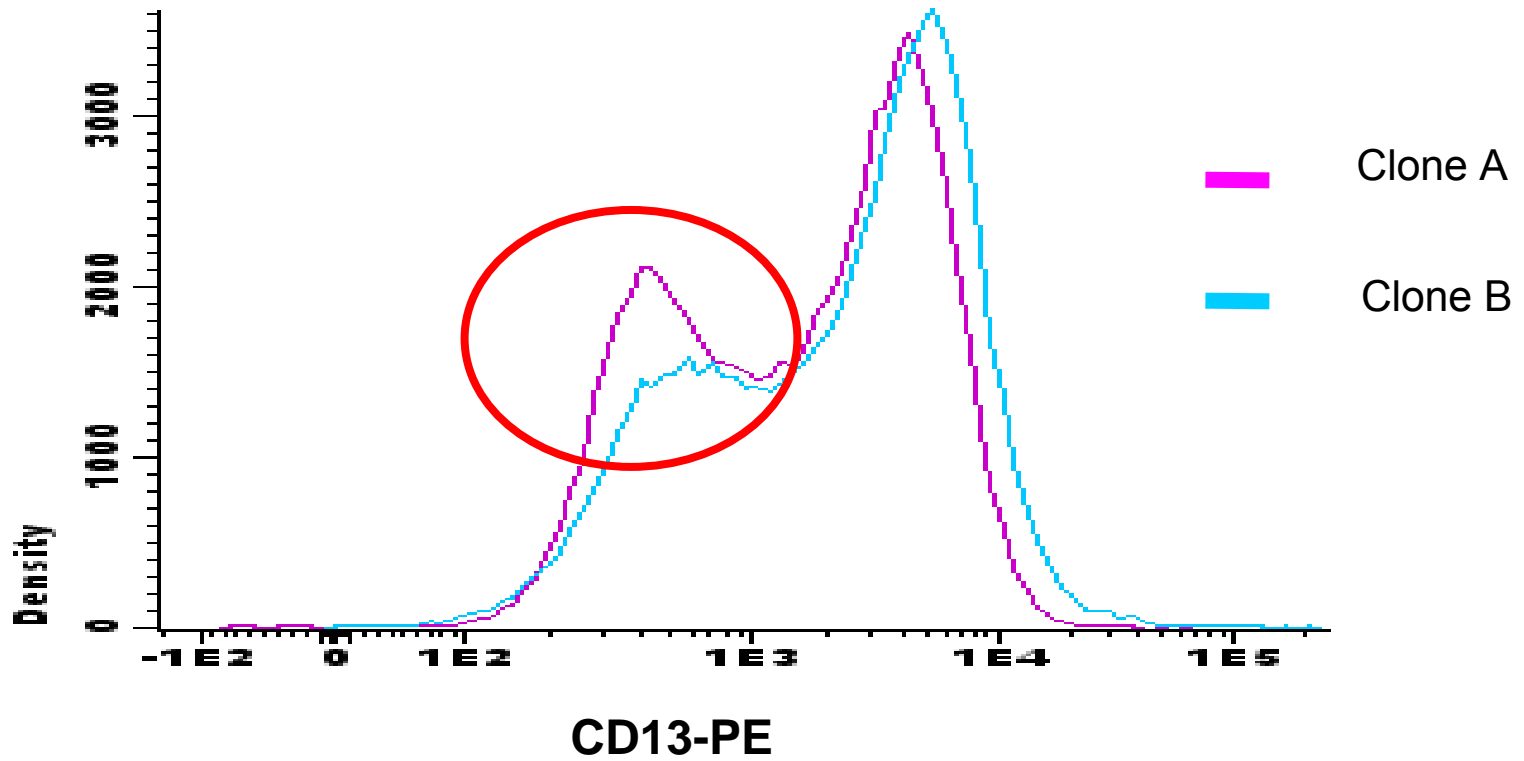


- Lage achtergrondfluorescentie vergemakkelijkt gating en interpretatie

Antistoffen

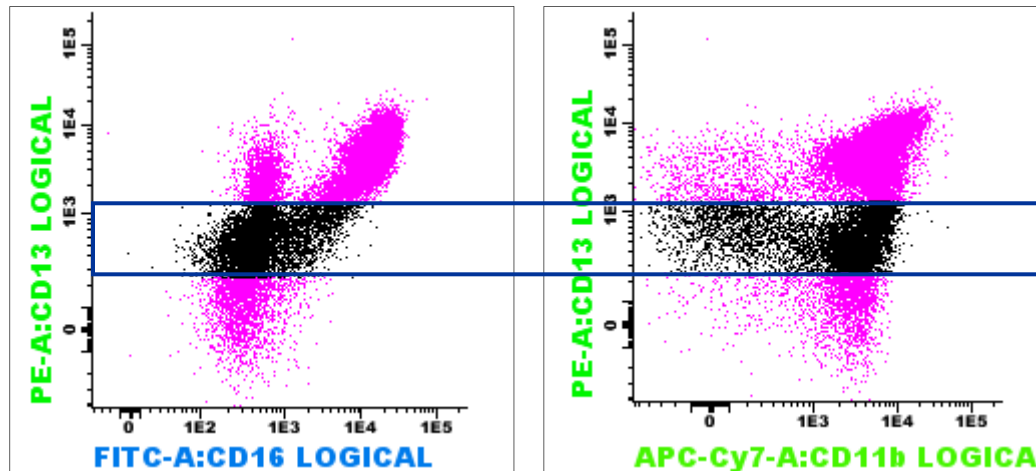
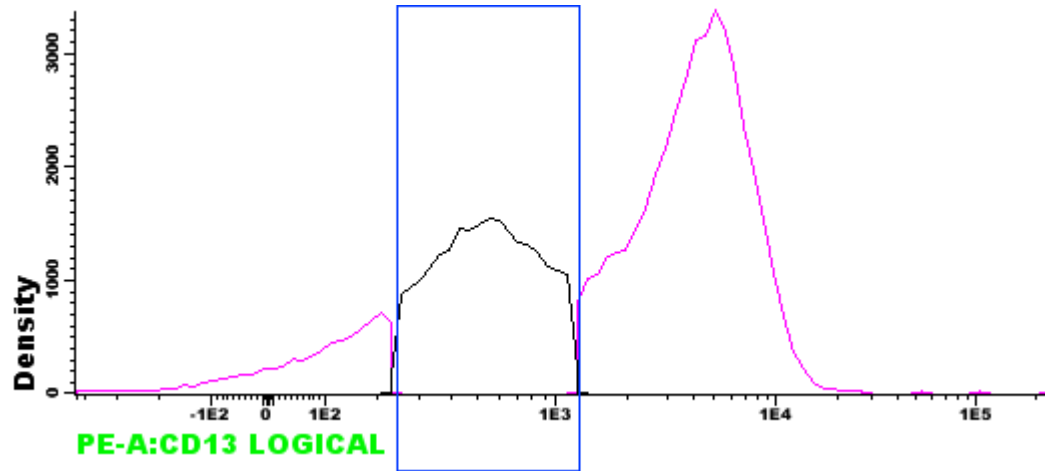


- Clonen



Antistoffen

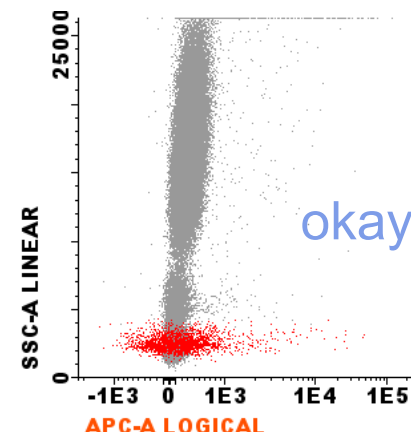
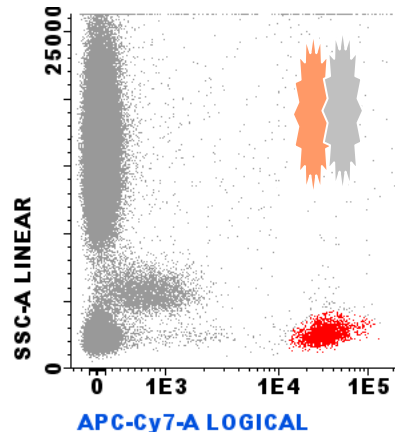
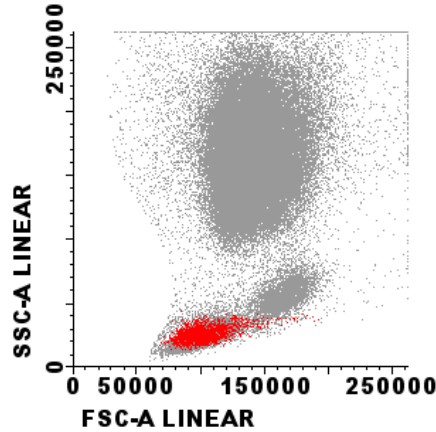
- Clonen



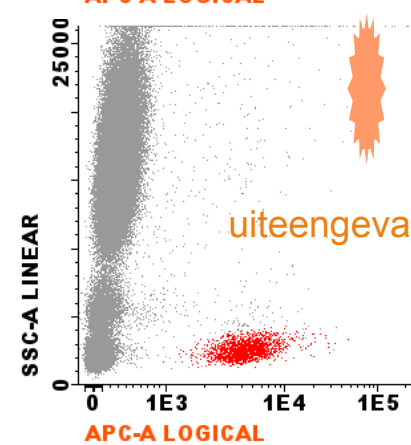
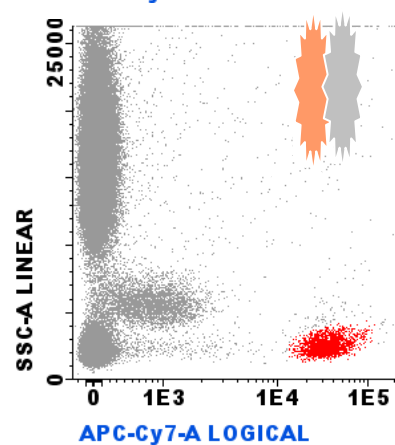
Antistoffen



- Tandemfluorochromen



Enkelkleuring met CD20-APC-Cy7



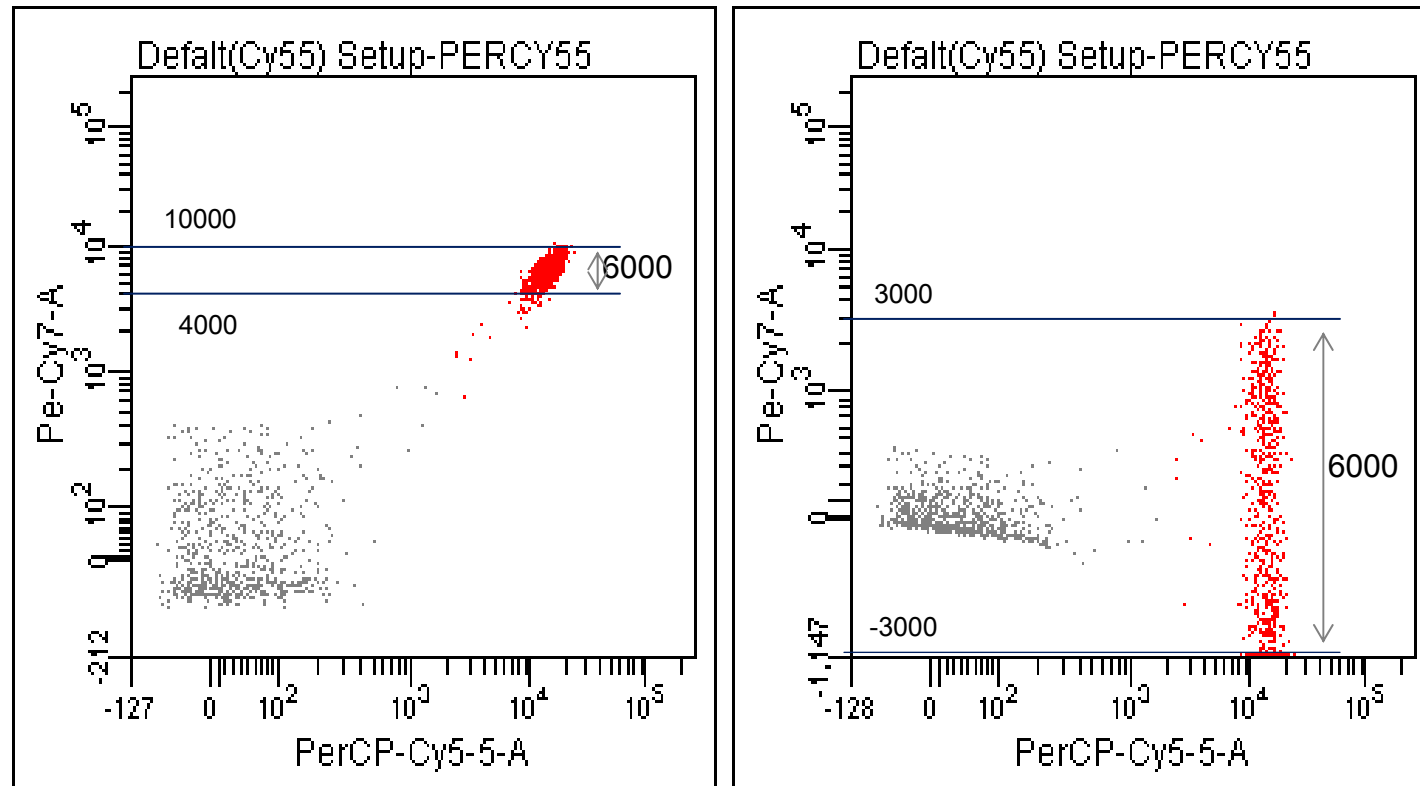
Instabiliteit tandemfluorochromen o.i.v. licht (APC-Cy7 → APC-H7)

Antistoffen



- Data Spread

Enkel kleuring met CD4-PerCP-Cy5.5

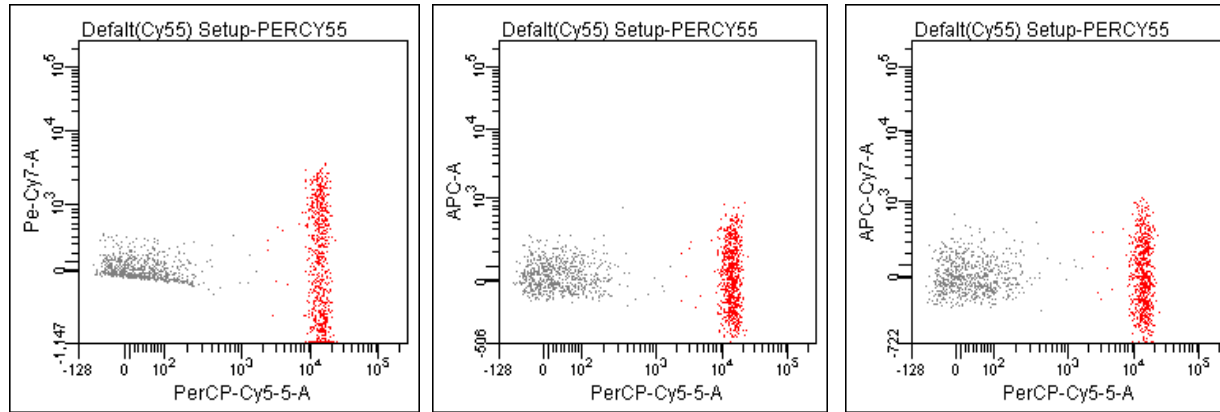


Digital data processing → data spread

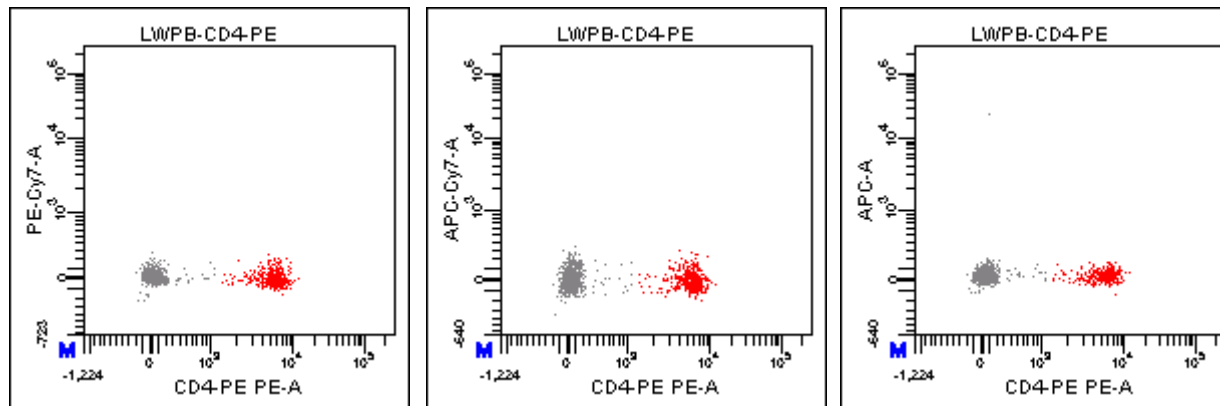
Antistoffen

- Data Spread

CD4 PerCP-Cy5.5 “Spread”



CD4 PE “Spread”



1. Fluorochroom afhankelijk (i.h.a.: hogere λ , meer spread)
2. Verlies van gevoeligheid



Antistoffen

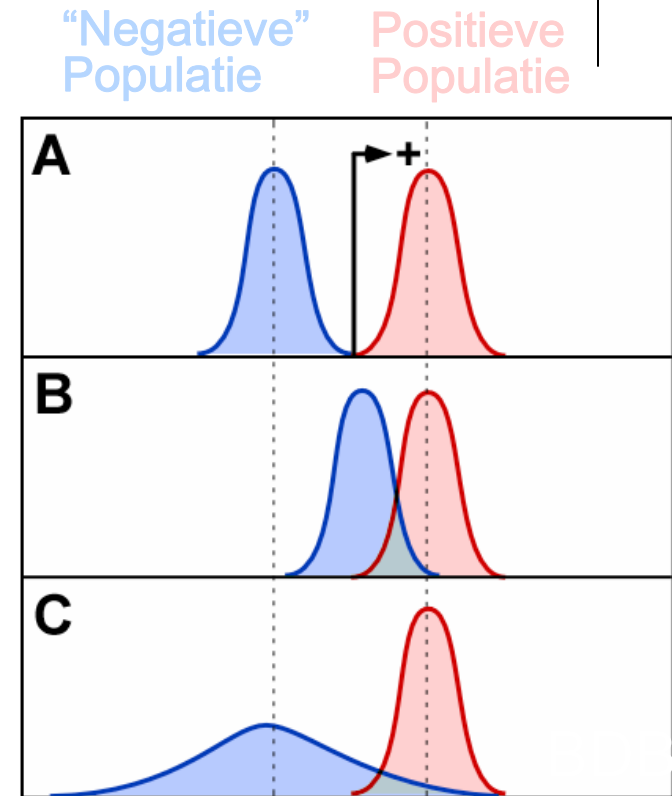


- Effect van Data Spread

Negatieve populatie heeft
een lage achtergrond
Populaties goed gescheiden

Negatieve populatie heeft
een hoge achtergrond
Populaties slecht gescheiden

Negatieve populatie heeft
een lage achtergrond
hoge CV (Spread)
Populaties slecht gescheiden



 **BD**
BD Biosciences

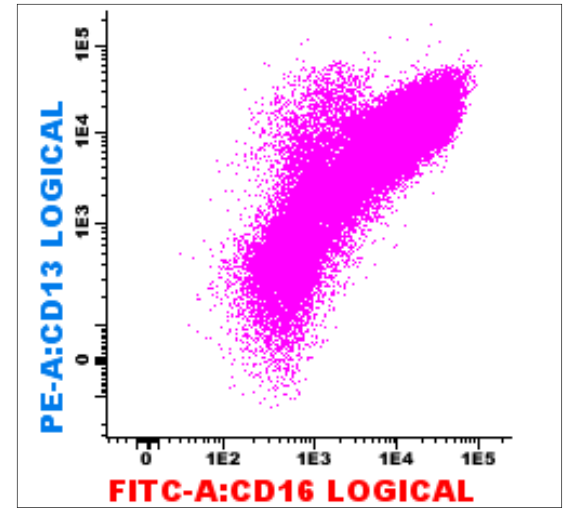
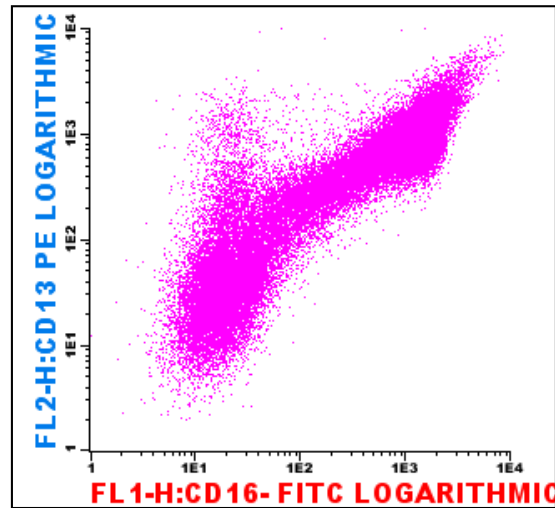
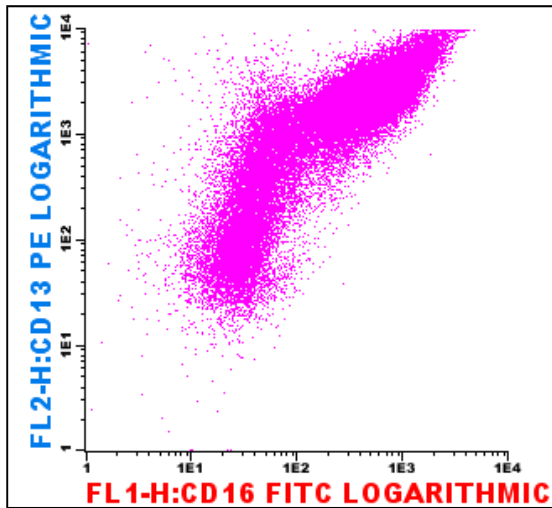
Het vermogen om populaties te onderscheiden is een
functie van zowel achtergrond als ook van “spread” van de
negatieve populatie

Valkuilen



- Experimenteel
 - Instrument Setup
 - Scatter
 - Fluorescentie
 - Procedure
 - Antistoffen
 - Fluorochromen
 - Clonen
 - Tandemfluorochromen
 - Data Spread
 - Fluorescentiepatronen
- Data interpretatie

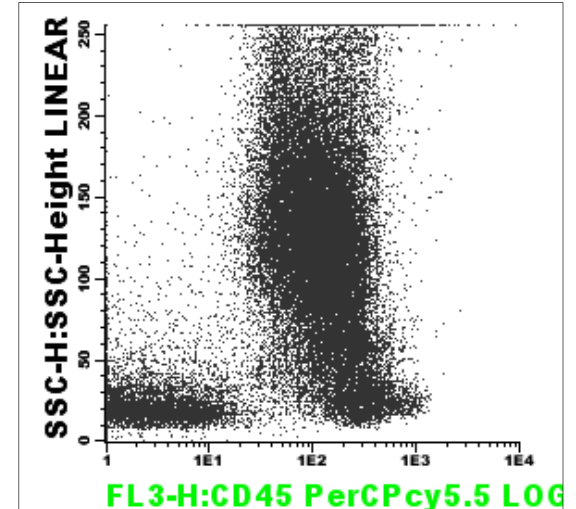
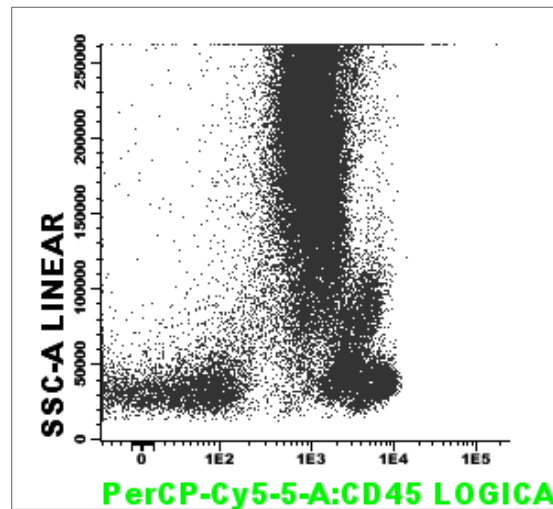
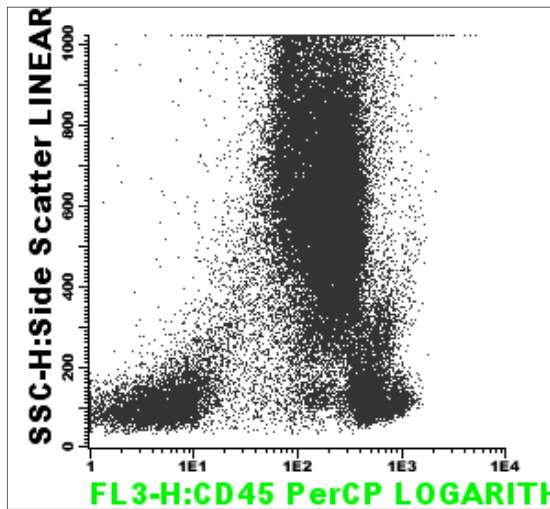
Discussie



Fluorescentiepatronen



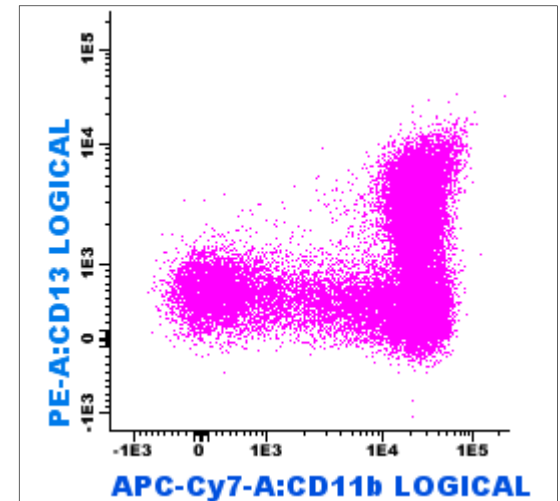
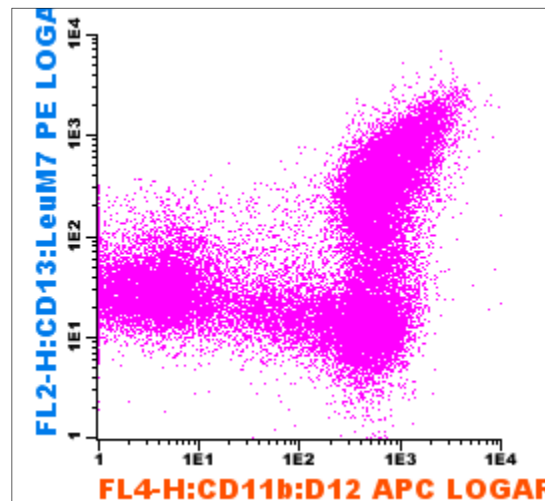
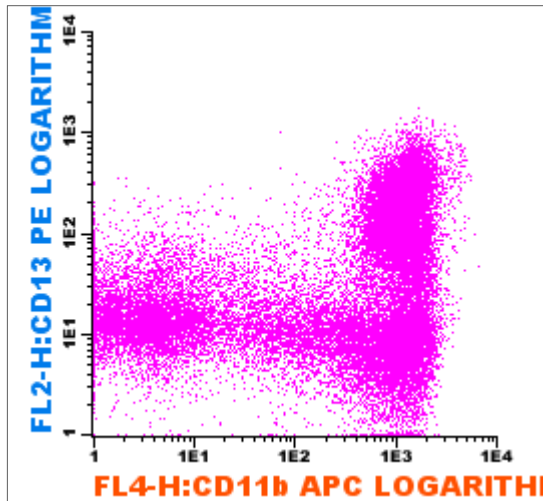
- CD45-SSC
 - 1 Beenmerg
 - 3 Centra



Fluorescentiepatronen



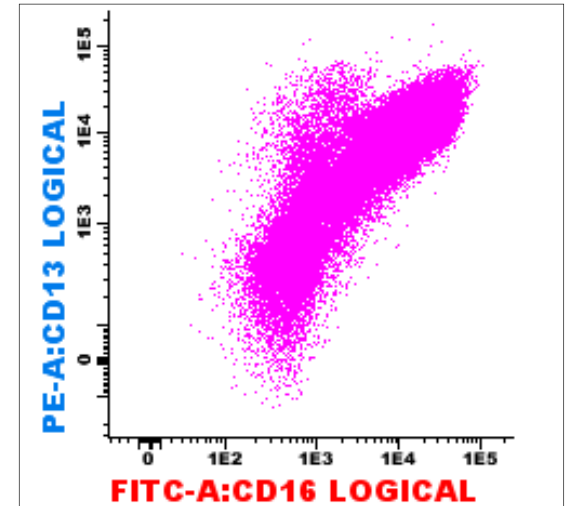
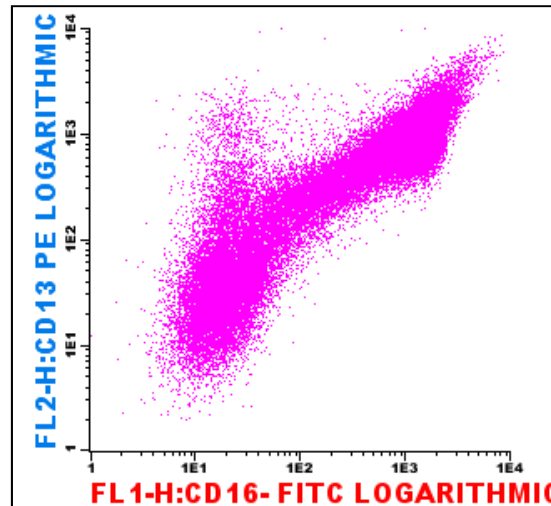
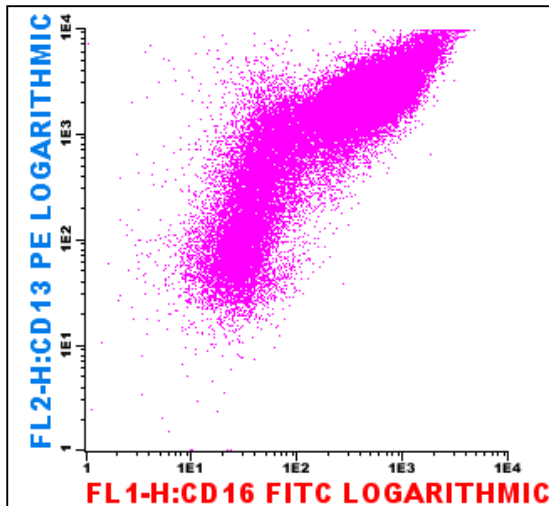
- CD11b-CD13
 - 1 Beenmerg
 - 3 Centra



Fluorescentiepatronen



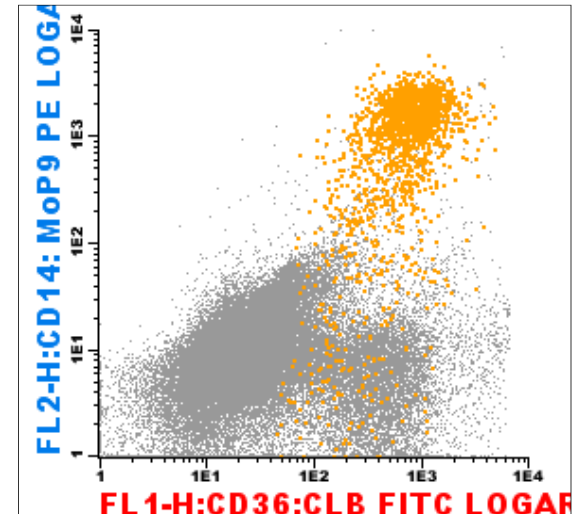
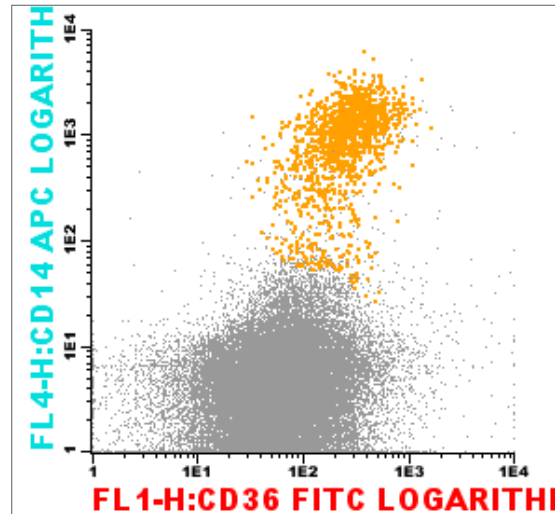
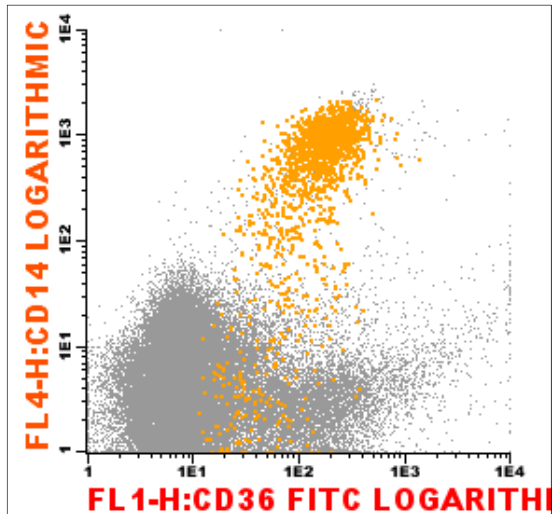
- CD16-CD13
 - 1 Beenmerg
 - 3 Centra



Fluorescentiepatronen



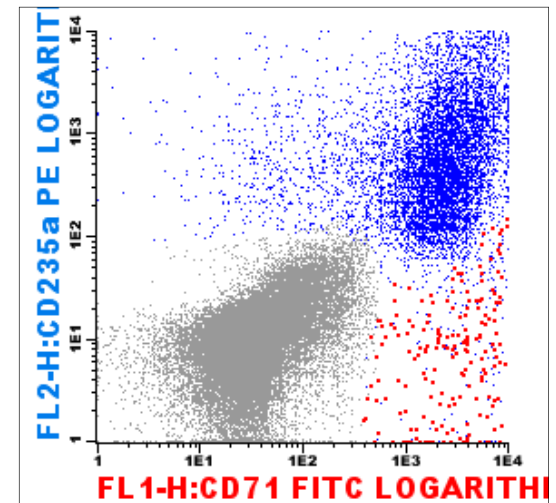
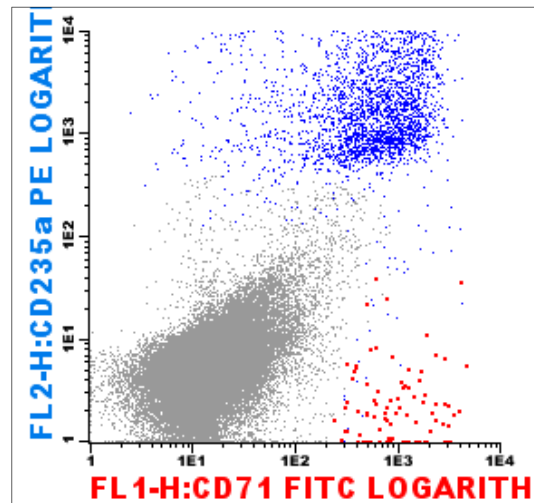
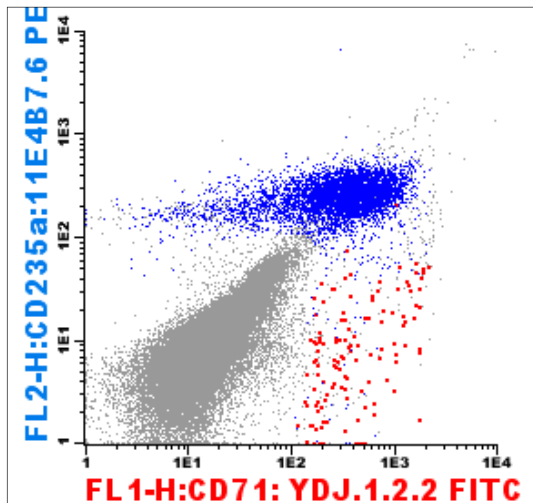
- 36-14
 - 1 Beenmerg
 - 3 Centra



Fluorescentiepatronen



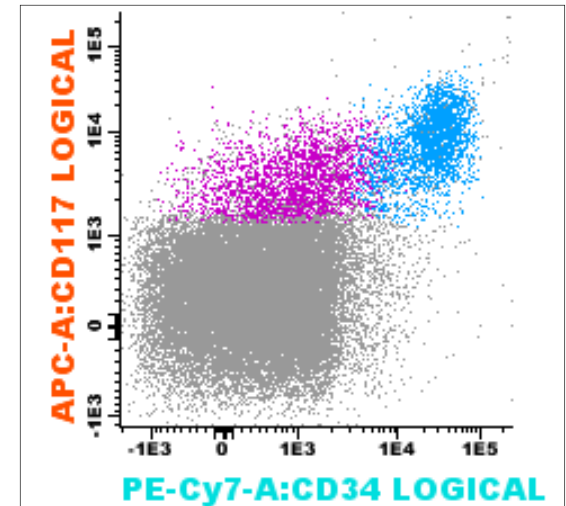
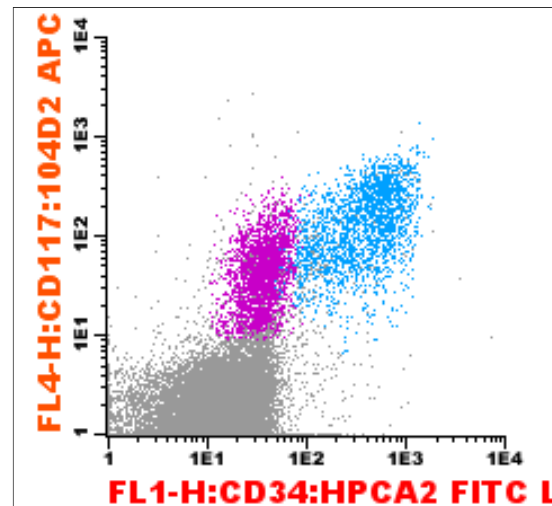
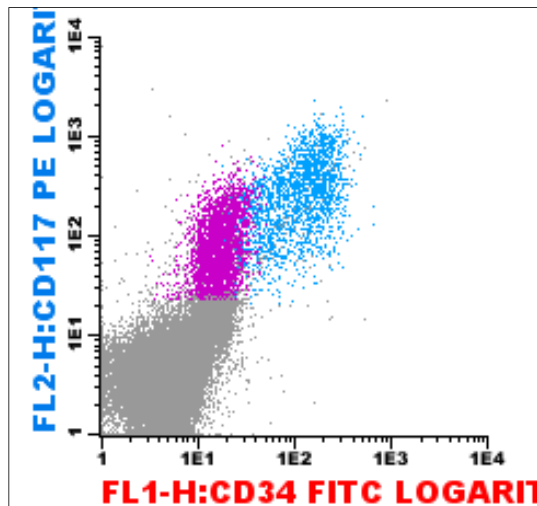
- CD71-CD235a
 - 1 Beenmerg
 - 3 Centra



Fluorescentiepatronen



- CD34-CD117
 - 1 Beenmerg
 - 3 Centra



Conclusies



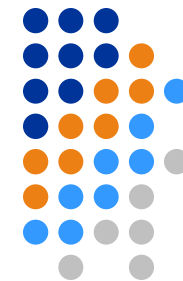
- Experimenteel
 - Instrument Setup
 - Correct m.b.t. scatter, treshold en fluorescentie
 - Continuïteit waarborgen
 - Procedure
 - Celsuspensie verkrijgen door bulklysis (zonder fixatief)
 - Antistoffen
 - Fluorochroomkeuze afhankelijk van het doel
 - Reactiviteit verschillende clonen testen
 - Fluorescentiepatronen
 - Afhankelijk van apparatuur, setup, procedure en antistoffen

Stelling



Vergelijkingen in de tijd binnen één centrum maar ook tussen centra:

Richtlijnen voor instrument setup, procedures en antistoffen noodzakelijk.

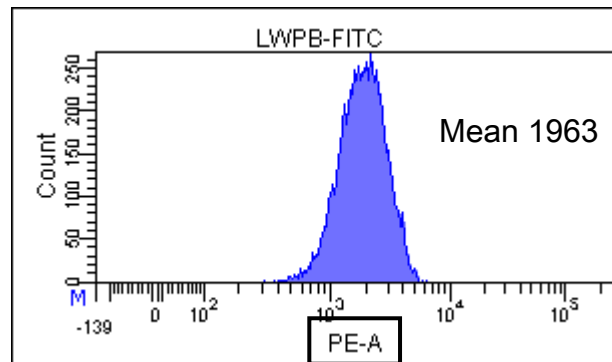
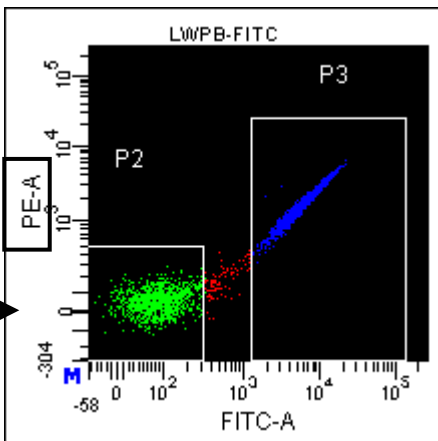
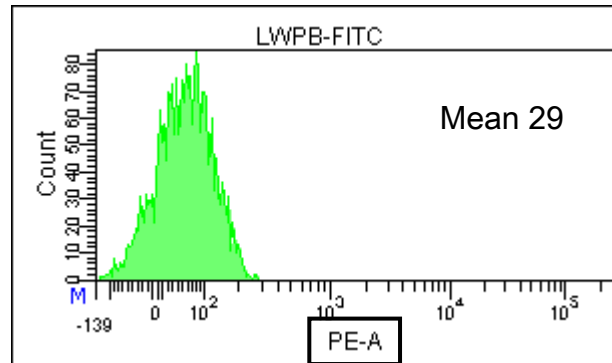
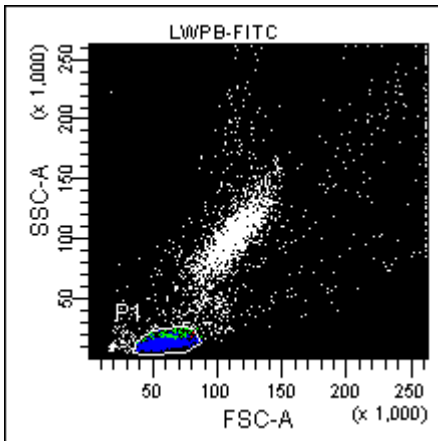




Manueel Instellen van de flowcytometer



- Stel de compensatie in voor correctie van spectrale overspraak



Cytometer Settings

Parameters Compensation

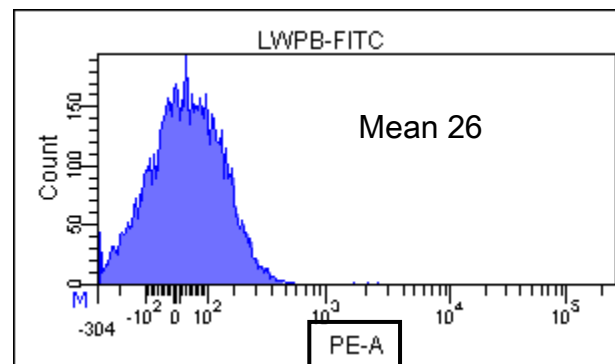
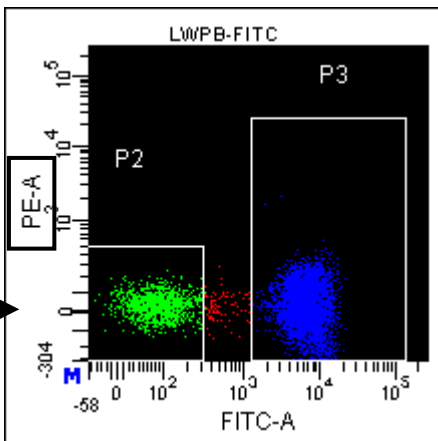
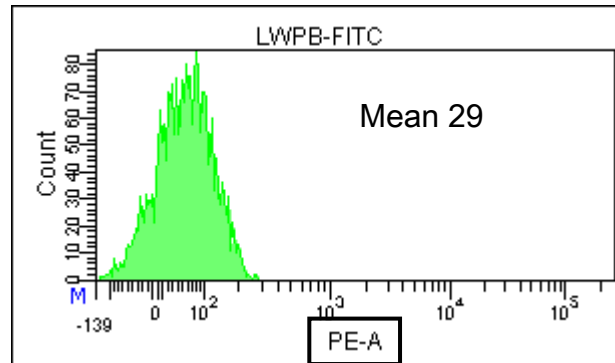
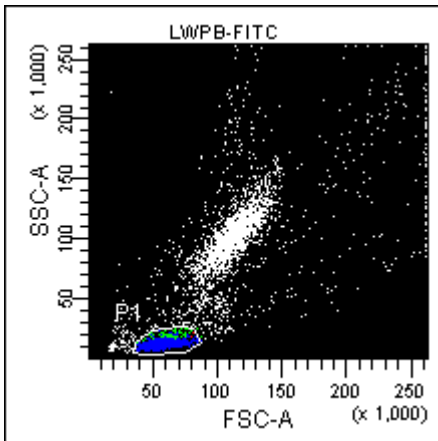
Enable Compensation

Fluorochrome	- % Fluorochrome	Spectr...
• PE	FITC	0.00
• PerCP	FITC	0.00
• APC	FITC	0.00
• FITC	PE	0.00
• PerCP	PE	0.00
• APC	PE	0.00
• FITC	PerCP	0.00
• PE	PerCP	0.00
• APC	PerCP	0.00
• PE	APC	0.00
• PerCP	APC	0.00

Manueel Instellen van de flowcytometer



- Stel de compensatie in voor correctie van spectrale overspraak



Cytometer Settings

Parameters Compensation

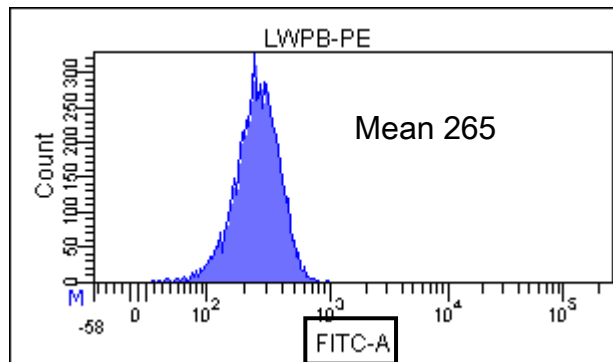
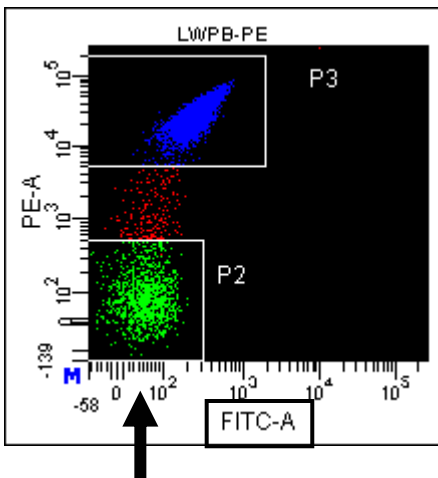
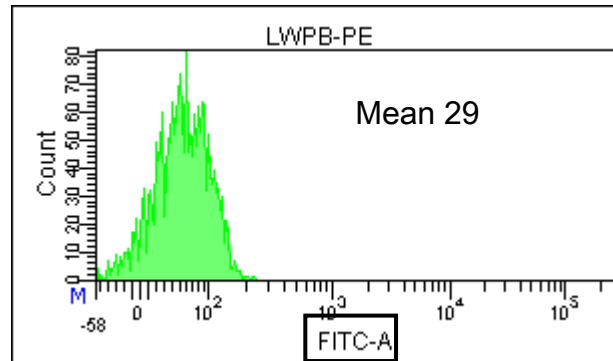
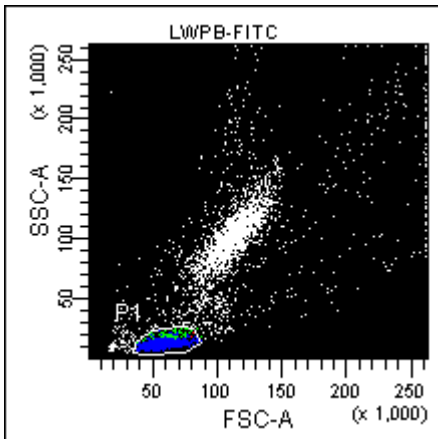
Enable Compensation

Fluorochrome	- % Fluorochrome	Spectr...
PE	FITC	27.50
PerCP	FITC	0.00
APC	FITC	0.00
FITC	PE	0.00
PerCP	PE	0.00
APC	PE	0.00
FITC	PerCP	0.00
PE	PerCP	0.00
APC	PerCP	0.00
FITC	APC	0.00
PE	APC	0.00
PerCP	APC	0.00

Manueel Instellen van de flowcytometer



- Stel de compensatie in voor correctie van spectrale overspraak



Cytometer Settings

Parameters Compensation

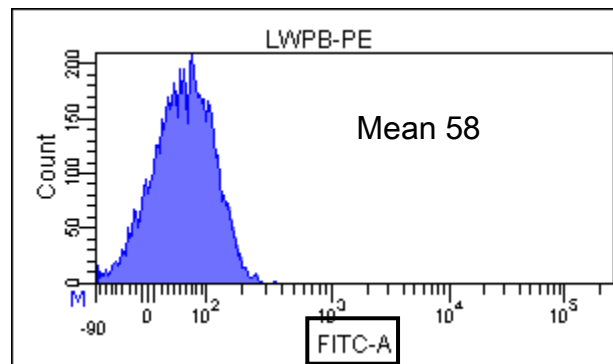
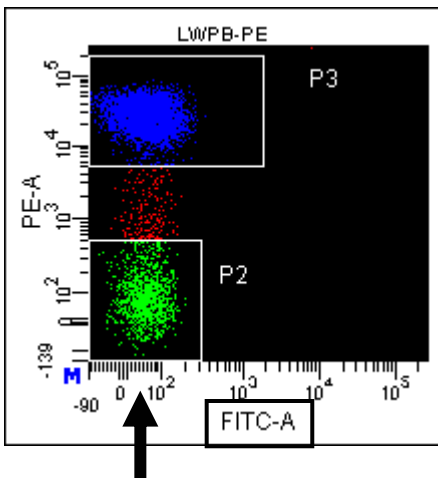
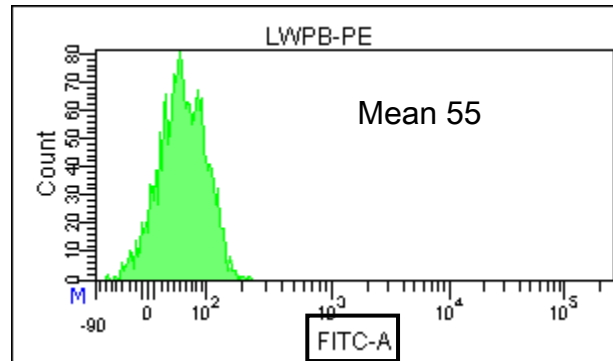
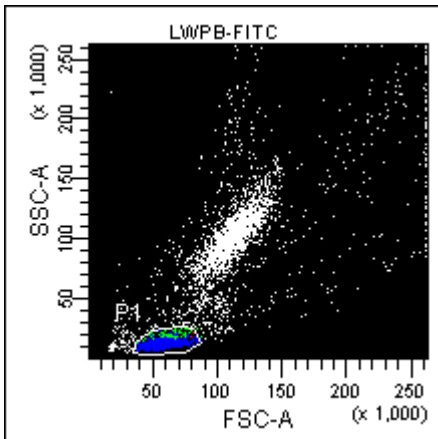
Enable Compensation

Fluorochrome	- % Fluorochrome	Spectr...
• PE	FITC	0.00
• PerCP	FITC	0.00
• APC	FITC	0.00
• FITC	PE	0.00
• PerCP	PE	0.00
• APC	PE	0.00
• FITC	PerCP	0.00
• PE	PerCP	0.00
• APC	PerCP	0.00
• PE	APC	0.00
• PerCP	APC	0.00

Manueel Instellen van de flowcytometer



- Stel de compensatie in voor correctie van spectrale overspraak



Cytometer Settings

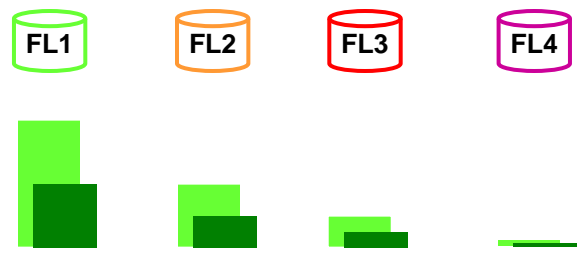
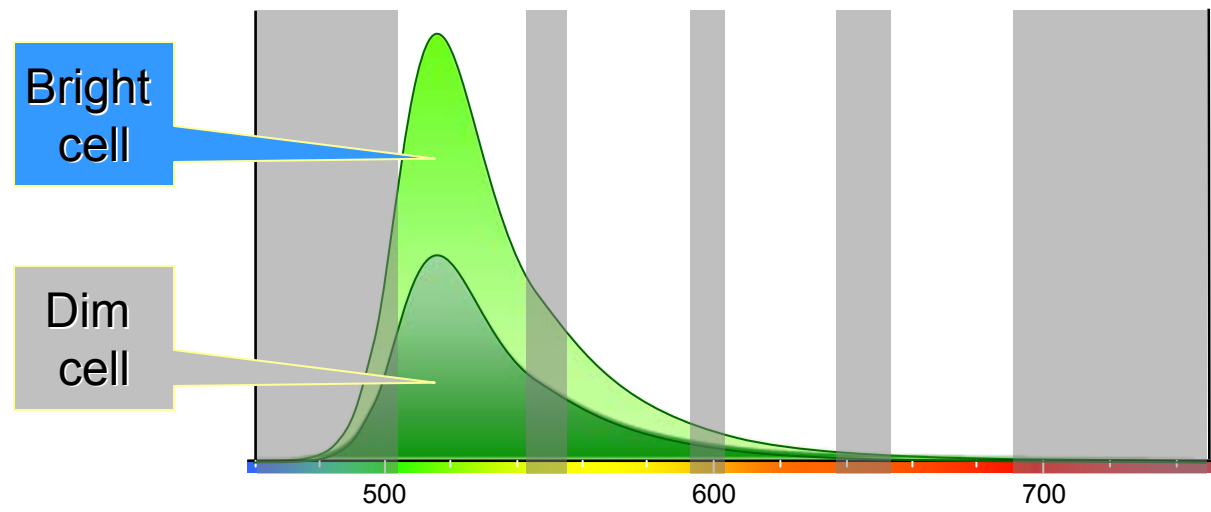
Parameters Compensation

Enable Compensation

Fluorochrome	- % Fluorochrome	Spectr...
• PE	FITC	0.00
• PerCP	FITC	0.00
• APC	FITC	0.00
• FITC	PE	0.70
• PerCP	PE	0.00
• APC	PE	0.00
• FITC	PerCP	0.00
• PE	PerCP	0.00
• APC	PerCP	0.00
• FITC	APC	0.00
• PE	APC	0.00
• PerCP	APC	0.00

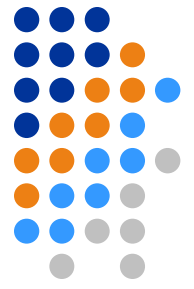


The “Rules” of Crosstalk: Constant Proportionality



Bright cell Intensities	500	60	5	0.4
Intensity ratios (%)	100	12	1	<0.1
Dim cell Intensities	250	30	2.5	0.2

No matter how the fluorescence intensity varies, the ratios of measured values stay constant.

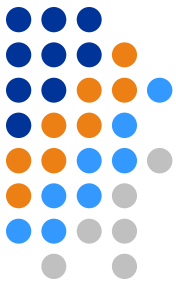


Standardization of Instrument Setup



1. Configuration
2. Scatter settings
 - Forward scatter (FSC), Side scatter (SSC) and threshold
3. PMT settings for fluorescence
 - CST beads
 - EuroFlow approach (8-pk Rainbow beads)
4. Compensation matrix
5. Guidelines for uniform Instrument Setup
 - Synchronized experiment
6. Scatter beads
 - Synchronized experiment

Configuration



- Which fluorochromes or cell parameters will be measured at each photomultiplier tube (PMT)

Cytometer Configuration

Cytometer: **BD FACSCanto II** Current Configuration: **EuroFlow config 3-laser, 8-color (4-2-2)**
 Cytometer Name: **FACSCantoII ErasmusMC**
 Serial Number: **V96300046**

Configurations

Base Configurations	
Copy of 3-laser, 8-color (4-2-2)	05/23/08 ...
LLD configuraties	
LLD 3-laser, 8-color (4-2-2)	08/05/08 ...
EuroFlow config 3-laser, 8-color (4-2-2)	03/30/09 ...

Blue Laser (488nm) FSC

Red Laser (633nm)

Violet Laser (405nm)

All Blue Red Violet

Window Extension (µs): 7.00 Comments:

Set Configuration Print Export OK Cancel

EF Nomenclature for fluorochromes:

Fluorochrome	Code
FITC	FITC
PE	PE
PerCP	PerCP
PerCP Cy5.5	PerCP Cy5.5
Pacific Orange	PO
Pacific Blue	PB
PE-Cy7	PE Cy7
APC-H7	APC H7
APC	APC

Uniform Instrument Setup



EuroFlow Cytometer Setup SOP - 170709

EUROFLOW Standard Operating Protocol for Cytometer Setup

Contents:

1. Instrument Configuration
2. FSC and SSC setting
3. Target channel PMT setting
4. Compensation setting
5. Instrument performance monitoring



Synchronized Experiment



- Synchronized data acquisition in 8 different centers
 1. Instrument Setup according to EF SOP
 2. 8-peak Rainbow beads as control
 3. Staining according to EF procedure for:
 - 1 stabilized blood
 - 3 to 4 healthy donors in each center:

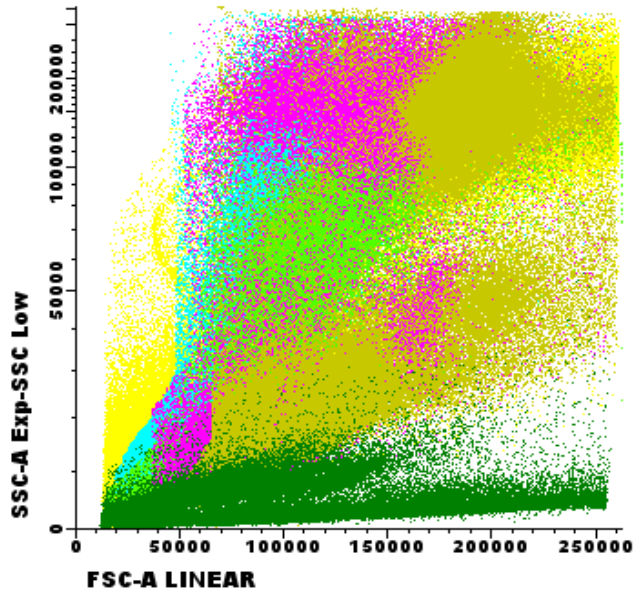
3.1 Use 50ul human peripheral blood								
3.2 Prepare 1 tube for Modified CLPD								
3.3 Add the amount of antibody to the tube:								
	Pacific	PacOr	FITC	PE	PerCP-Cy5.5	PECy7	APC	APC-H7
	Blue							
	CD20	CD45	CD8	CD27	CD4	CD19	CD14	CD3
Ab amount	10	3	10	10	10	5	3	3

Results of synchronized experiments

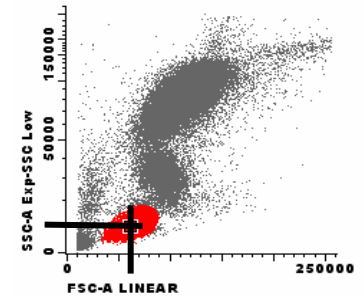
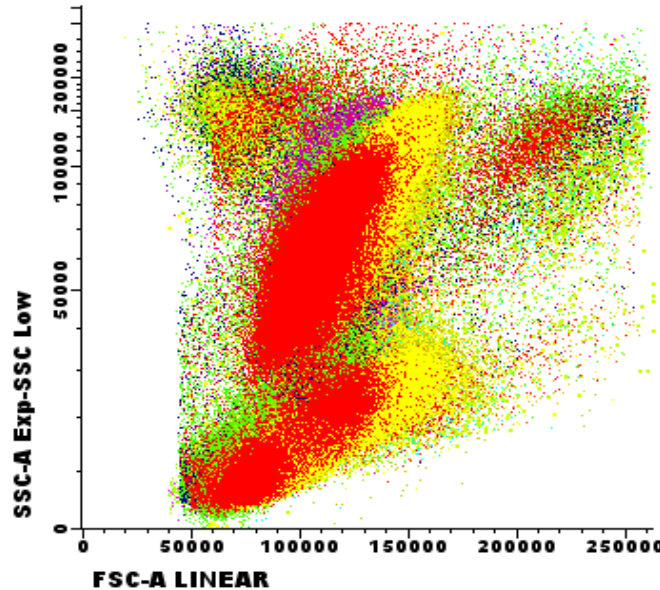


- Scatter

“Local” settings



EuroFlow settings



- Use 50ul peripheral blood of healthy donor
- Standard EF procedure using FACS Lysing solution

- Target values lymphocytes:
FSC: 55.000 (range 50.000 - 60.000)
SSC: 13.000 (range 11.000 - 15.000)

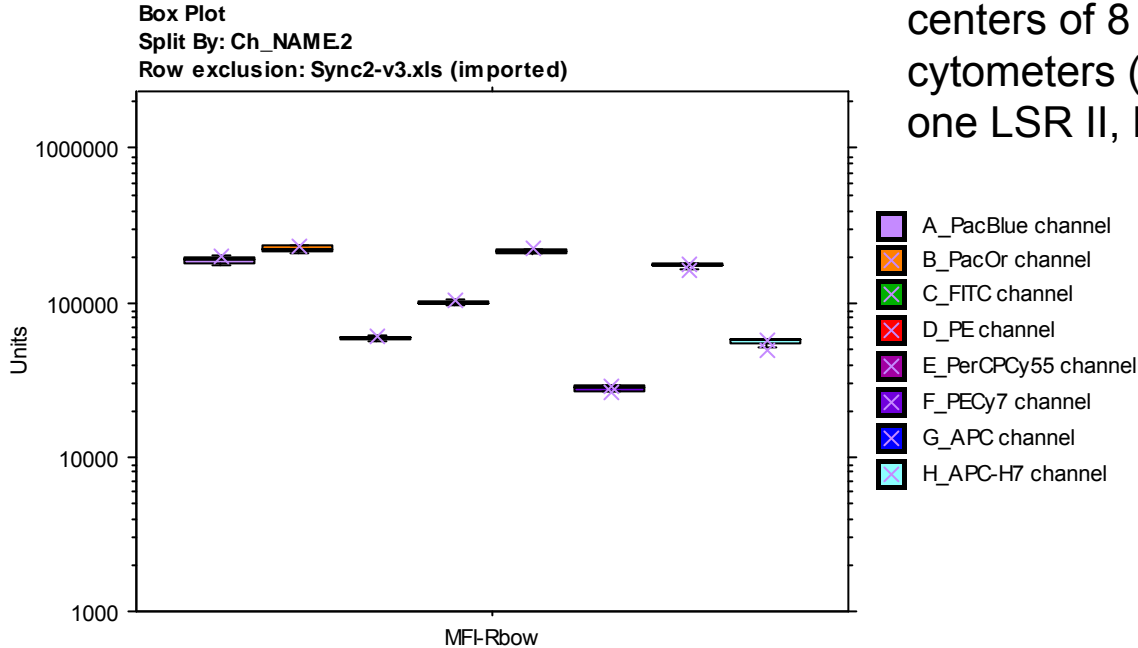
Fixed treshhold: 10,000

Remark: results of 7 different centers

Results of synchronized experiments



Data Rainbow beads in 8 different centers of 8 different flow cytometers (7x FACSCanto II and one LSR II, BD)



Descriptive Statistics

Split By: Ch_NAME2

Row exclusion: Sync2-v3.xls (imported)

	Mean	Std. Dev.	Coef. Var.
MFI-Rbow , Total	130165,452	73835,014	,567
MFI-Rbow , A_PacBlue channel	186995,128	10463,338	,056
MFI-Rbow , B_PacOr channel	222018,096	9364,052	,042
MFI-Rbow , C_FITC channel	58771,019	1548,629	,026
MFI-Rbow , D_PE channel	100027,144	2768,766	,028
MFI-Rbow , E_PerCPCy55 channel	214431,445	7009,384	,033
MFI-Rbow , F_PECy7 channel	27777,652	948,720	,034
MFI-Rbow , G_APC channel	173227,432	4684,230	,027
MFI-Rbow , H_APC-H7 channel	55656,722	2781,647	,050

- The Coeff. of Variation is less than 5,6% between centers

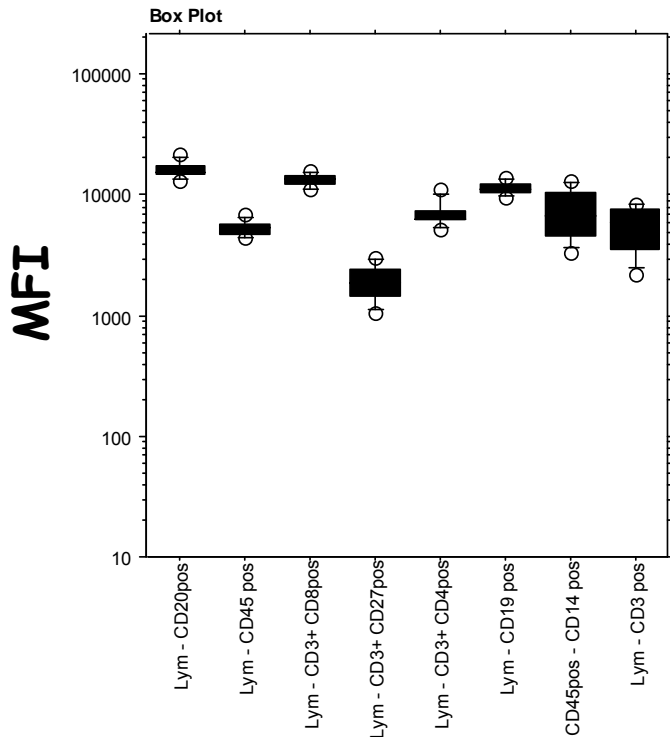
Results of synchronized experiments



Pacific Blue
Pacific Orange
FITC
PE
PerCP-Cy5.5
PC7
APC
APC-H7

Stabilized normal PB

Interlaboratory MFI CV of gated cell subsets

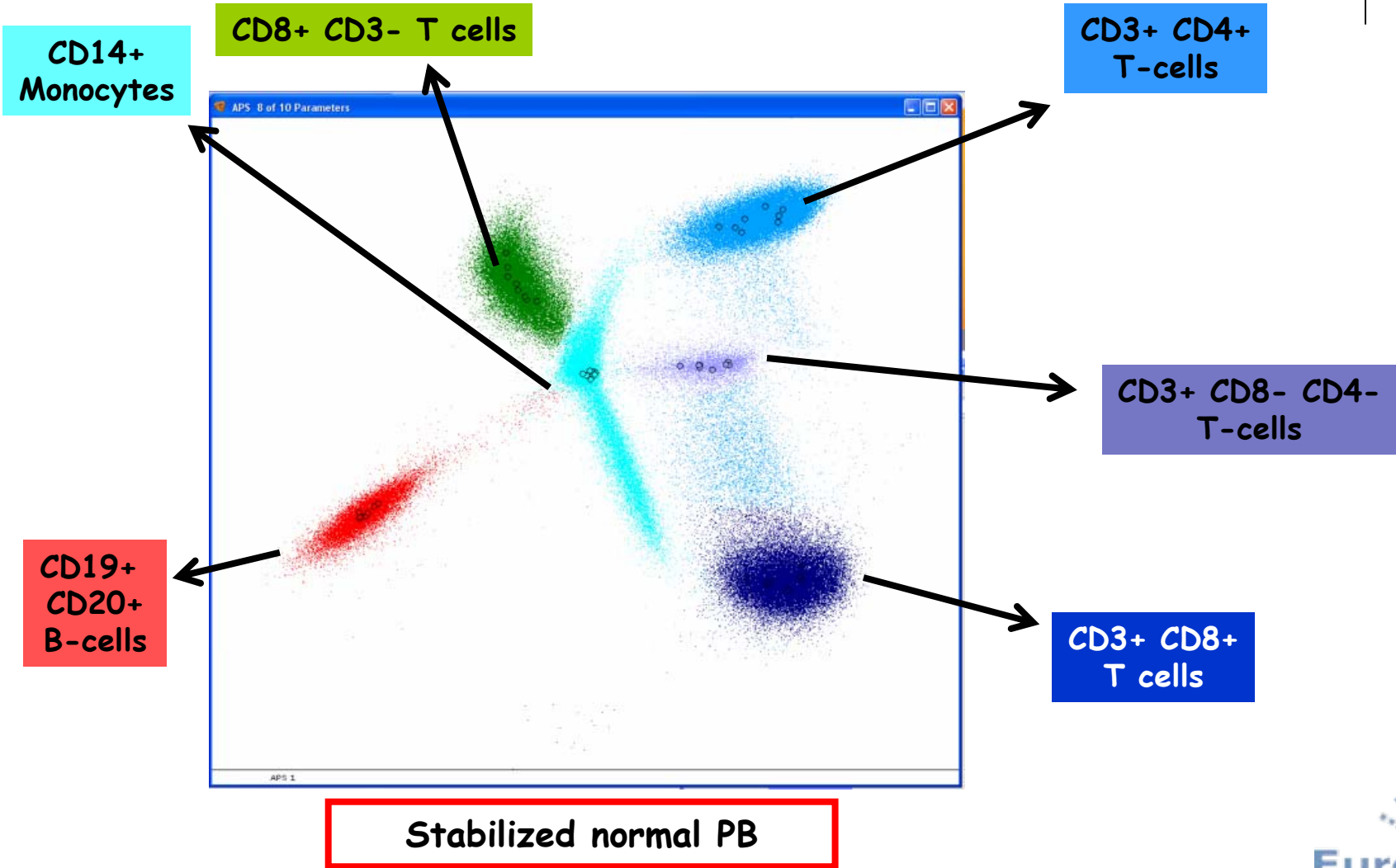


Cell subset	CV
Lym - CD20pos	15,25%
Lym - CD45 pos	13,90%
Lym - CD19 pos	11,13%
Lym - CD3 pos	38,67%
CD45pos - CD14 pos	43,77%
Lym - CD3+ CD4pos	24,68%
Lym - CD3+ CD8pos	11,35%
Lym - CD3+ CD27pos	32,09%

Results of synchronized experiments



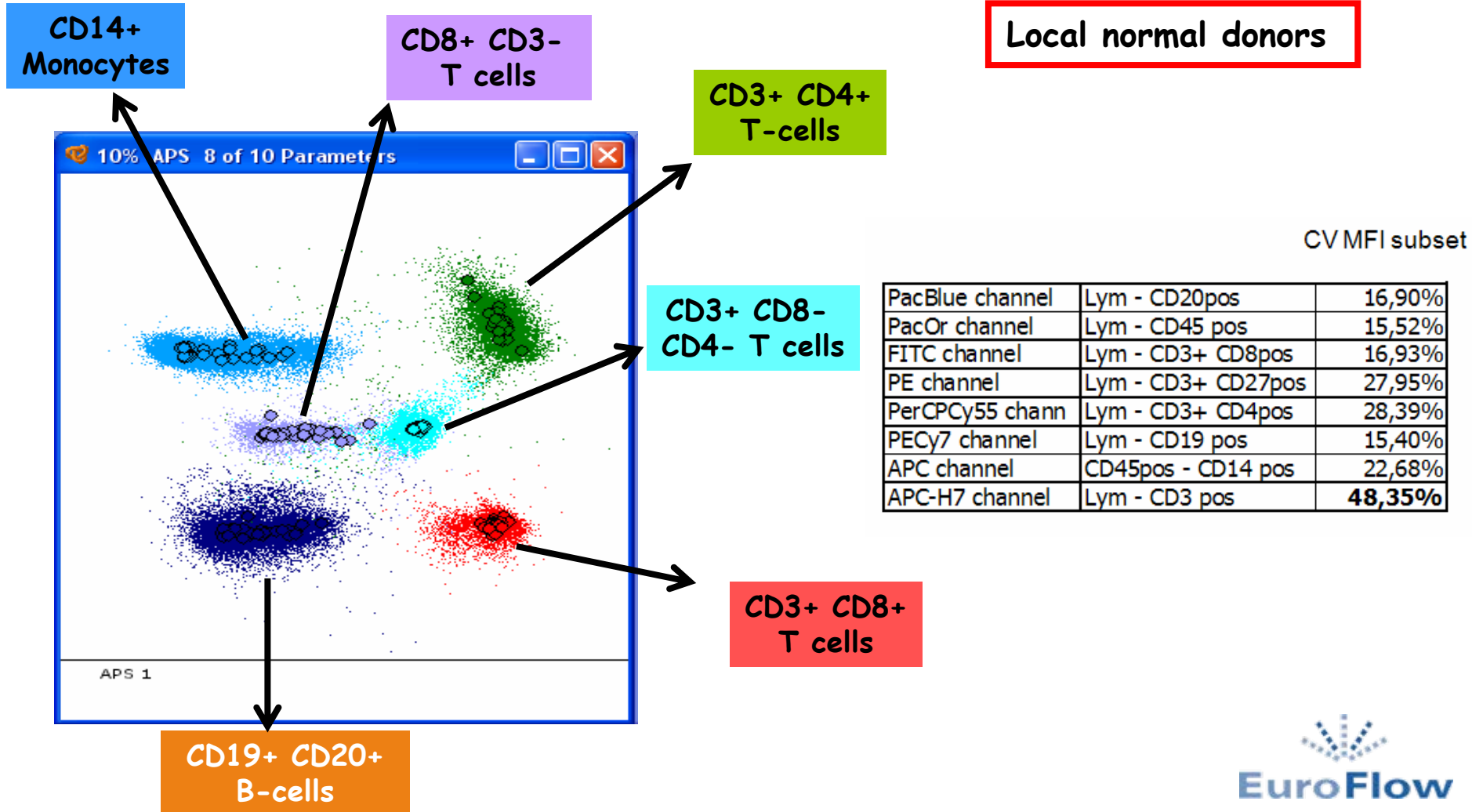
APS view of 8 merged data files from different centers (n=8)



Results of synchronized experiments



APS view of 30 merged data files from different centers



Conclusion



- Using a SOP for cytometer setup it is possible to generate identical data on different flow cytometers* independent of time and place
- Conditions:
 1. Universal Instrument Setup
 2. Identical sample preparation and staining protocols

